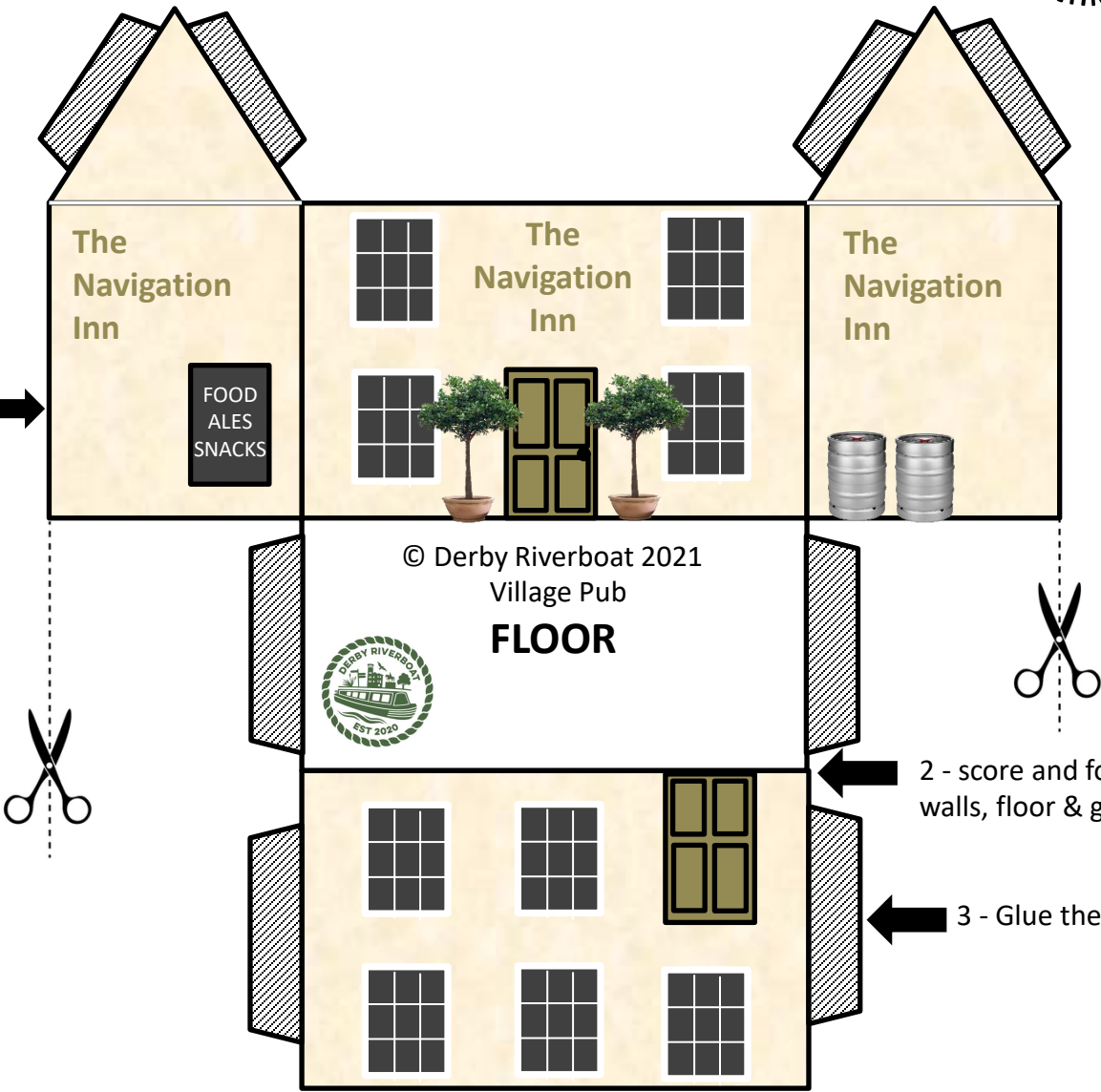


# Model Canal Village

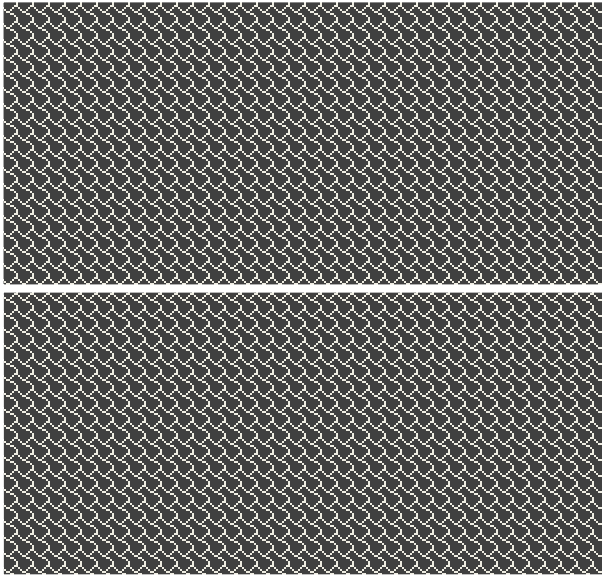
## MAKE A VILLAGE PUB

1 - Cut around outside edge of template



2 - score and fold walls, floor & glue tabs

3 - Glue these tabs



2 - score and fold



# Model Canal Village

## MAKE A VILLAGE PUB



**To make the village pub follow these steps...**

1. Print off page 1 onto a sheet of white A4 card
2. Cut around the outline of the pub, taking care not to cut off the glue tabs shaded grey). Also cut out the roof but don't cut down the white line in the middle of the roof.
3. Ask an adult to score along each fold of the pub with a ruler and a knife
4. Apply PVA glue or a glue stick to the shaded grey tabs on the walls and floor of the house.
5. Allow the glue to dry, once dry apply glue to the tabs on the sloping roof, then fold the ridge of the roof and place the roof on top of the pub

**Why not try...**

- You can repeat this several times if you want to make a village!
- The pub should be scaled to "OO gauge" so that you could use it with other models like trees, people and trains!
- Make your own template and decorate it as you like!

**£1.50 if printed onto card, free to download from website and print from home**

