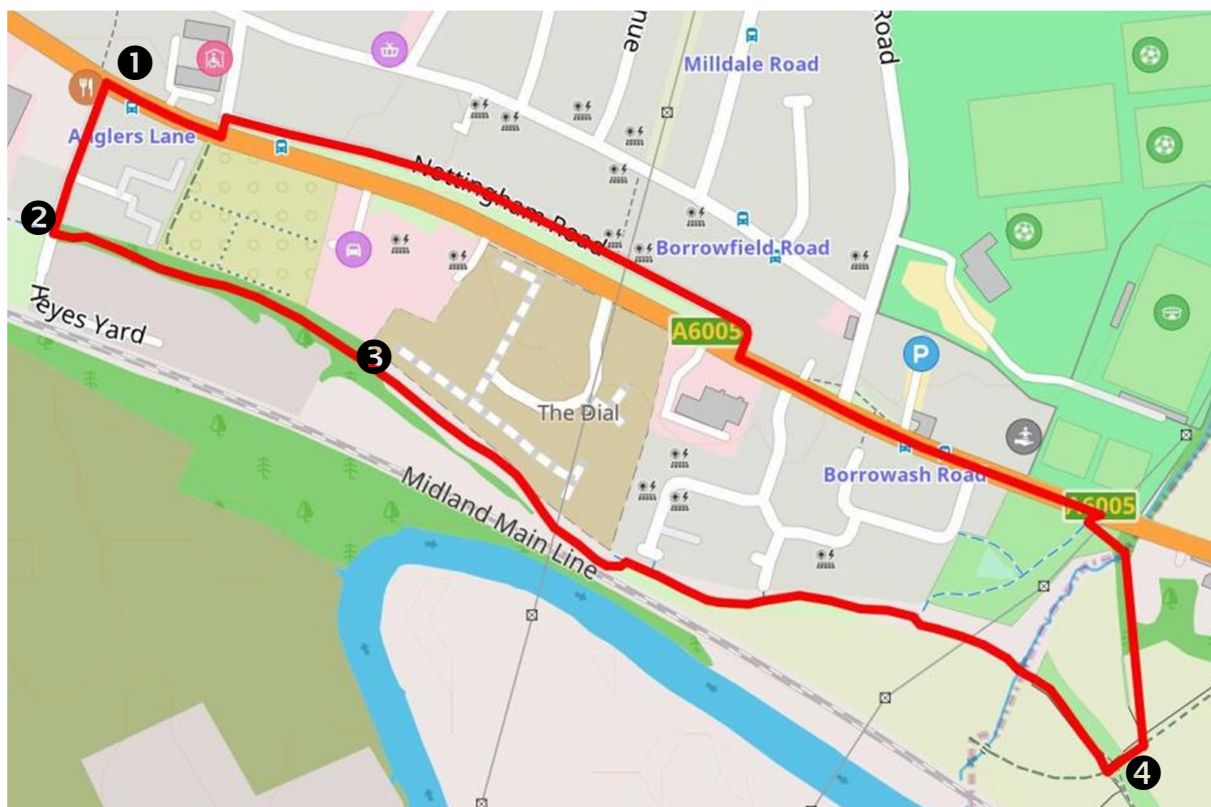




Spondon

Starting from Angler's Lane, this walk takes you to Ullicker's Bridge, either returning by the same route or looping back along Nottingham Road, about 1½ miles total.



Access: buses between Derby and Nottingham (indigo www.tinyurl.com/trentindigo and i4 www.tinyurl.com/trenti4) are fairly frequent. Whilst there is no public car park, on-street parking is freely available (but please consider local residents).

1. Before starting down Angler's Lane itself, take a moment to examine the Ghurkha restaurant. This building housed the original Anglers' Arms which moved to a new building the other side of Nottingham Road in the 1930s; and which is now the site of a care home. The old field name of Peckerdale is preserved in the new development opposite.



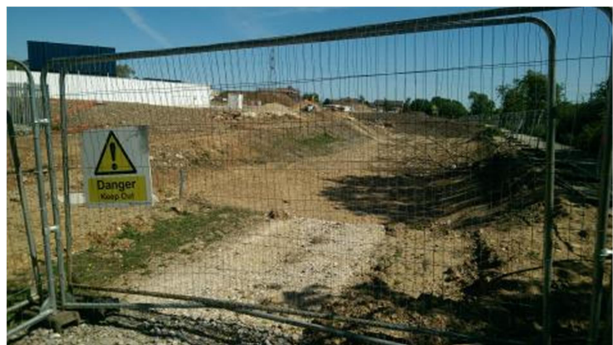
Walk down the lane to the site of the canal bridge, although restoration will require some adjustment (possibly a lift bridge). The pipe arch has recently been recovered, but shows the height and shape of the original bridge.



Before turning left to pick up the canal route, take a look at the information board on the opposite side towards Derby. This was installed in 2006 by Spondon Community Association as one of its earliest projects when it started to support the canal restoration plans. At that stage, the strategy of the Canal Trust was to create a series of "linear parks" along the route.



2. From here, the original canal route east to Station Road in Borrowash is (currently with a short exception) now owned by the Trust. Having passed the rear of Peckerdale Gardens, the area on the left is Borrowfield Allotments; shortly after that you reach the new housing being developed by Wheeldon Brothers. They approached the Trust at an early stage with a proposal to install an "attenuation tank"



(required to manage rainwater drainage) along the canal route to give an early illustration of the canal in water. An information board alongside the path explains this and the complete restoration project to passers-by.

3. Beyond this is the boundary of the existing Wimpey development (this length is not owned by the Trust) which ends in a small public park. Where the path forks take the right hand branch down to a footbridge over the Bourne Brook. Care must be taken on this path, as there are some fallen branches and bramble to negotiate and the path is rough under foot. This marks the boundary between Derby City and Erewash Councils. If you look carefully, the bottom half of the original brick culvert can be seen. Shortly after that you reach Ullicker's Bridge (see right), the origin of the name is unknown! This is one of the earliest restoration projects undertaken by the Trust in the mid-1990s.



4. The canal route can be followed, without too much difficulty, as far as Sandiacre and the junction with the Erewash Canal. If you want to cut the length down a bit there are several points at which you can re-join the main road to pick up a bus back to the start point. Alternatively, return by the same route or for a change of scenery (albeit not particularly picturesque) you can return via Nottingham Road. Turn left over Ullicker's Bridge, shortly after that there is a small gate on the left. Go through and follow the path, back over the Bourne, emerging on Nottingham Road. Turn left again to reach the junction with Angler's Lane.

A fuller history of the canal in Spondon can be found in the Spondon Archive book "Canoes to Commuters"

(www.bit.ly/spondonarchive).

