

Derby Canal & Waterside

Derby Arm Boat Lift, Waterside Dining & Derby Marina



www.derbycanal.org.uk

© 2019 The Derby and Sandiacre Canal Trust Limited

The information in this document is the property of The Derby and Sandiacre Canal Trust Limited and may not be copied or communicated to a third party, or used for any purpose other than that for which it is supplied without the express written consent of The Derby and Sandiacre Canal Trust Limited. This information is given in good faith based upon the latest information available to The Derby and Sandiacre Canal Trust Limited



Introduction

About Us

- Registered Charity
- 750 Paying Members
- Cross Party Support
- Trustees include:
 - Derby City Council
 - EBC, SDDC, Derbyshire CC
 - Local MP
 - The Inland Waterways Association
 - Enthusiasts



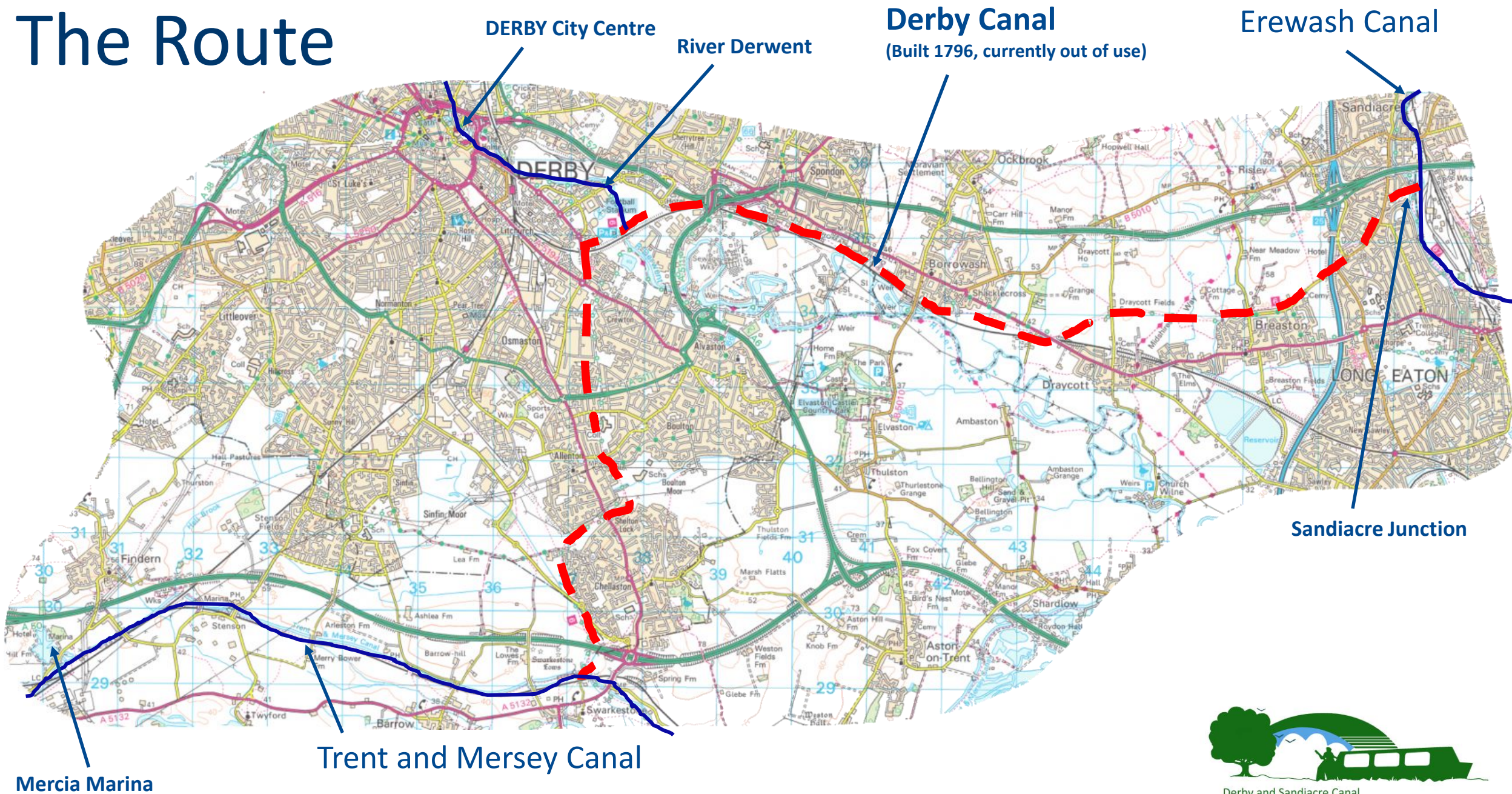
Our objectives...

To restore the Derby Canal (built in 1796)
as near to its original line as possible

To enhance the lives of our community



The Route



Benefits



Wildlife

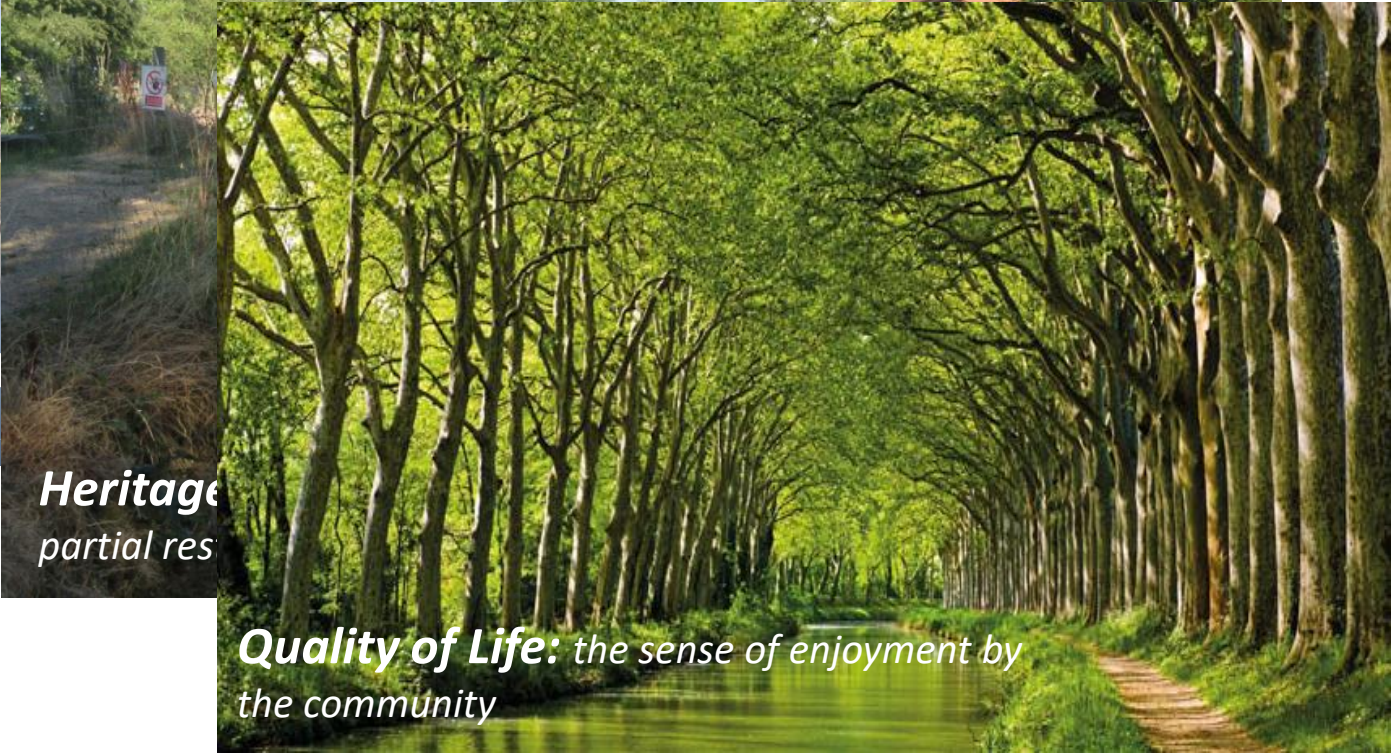
Economy

Heritage

Quality of Life



*Wildli
partiall
Economy
(e.g.: Derb*



*Heritage
partial res*

*Quality of Life: the sense of enjoyment by
the community*



Our Community

Hedgerow Park Vibrancy Tourism
Investor Alvaston Environment Festival Locks Football Music
Innovation
STEM Canal Cycling Relax
Derby Arm Listen Spondon Arena Visitors
Wildlife Bike Eat
Hotels Ale Drink Bridge SMEs
Green Health Opportunity
Schools D2N2 Cathedral
Derby
Luxury
Members



How we Work

- Act as Facilitator
- Seek Commercial Answers
- Generate Wealth
- Use Grant Funding elsewhere
- Working to a Flexible Plan
- Heritage Reinvented!



Derby's Huge Potential



The Centre of England - **50%** of the population **within an hour's drive**.

The centre of the canal network

13.25m visitors p.a. visit the

Peak District

An under utilised and beautiful river

Derby – centre of innovation.



Our Vision



Derby and Sandiacre Canal

CLICK HERE TO LINK TO DERBY WATERSIDE VIDEO



Derby Triangle Waterfront

Exclusive Waterside Dining and entertainment

Waterfront overlooking Derby Arm



New Footbridge linking attractions



Derby Arena



Derby County Football Stadium

The Derby Arm Boat lift, the waterfront, Derby County Stadium and the Derby Arena will create a unique **visitor attraction cluster**.



Derby Arm Boat Lift

The UK's next water based attraction

Falkirk Wheel Boat lift (Scotland)
attracts **650,000 visitors a year**



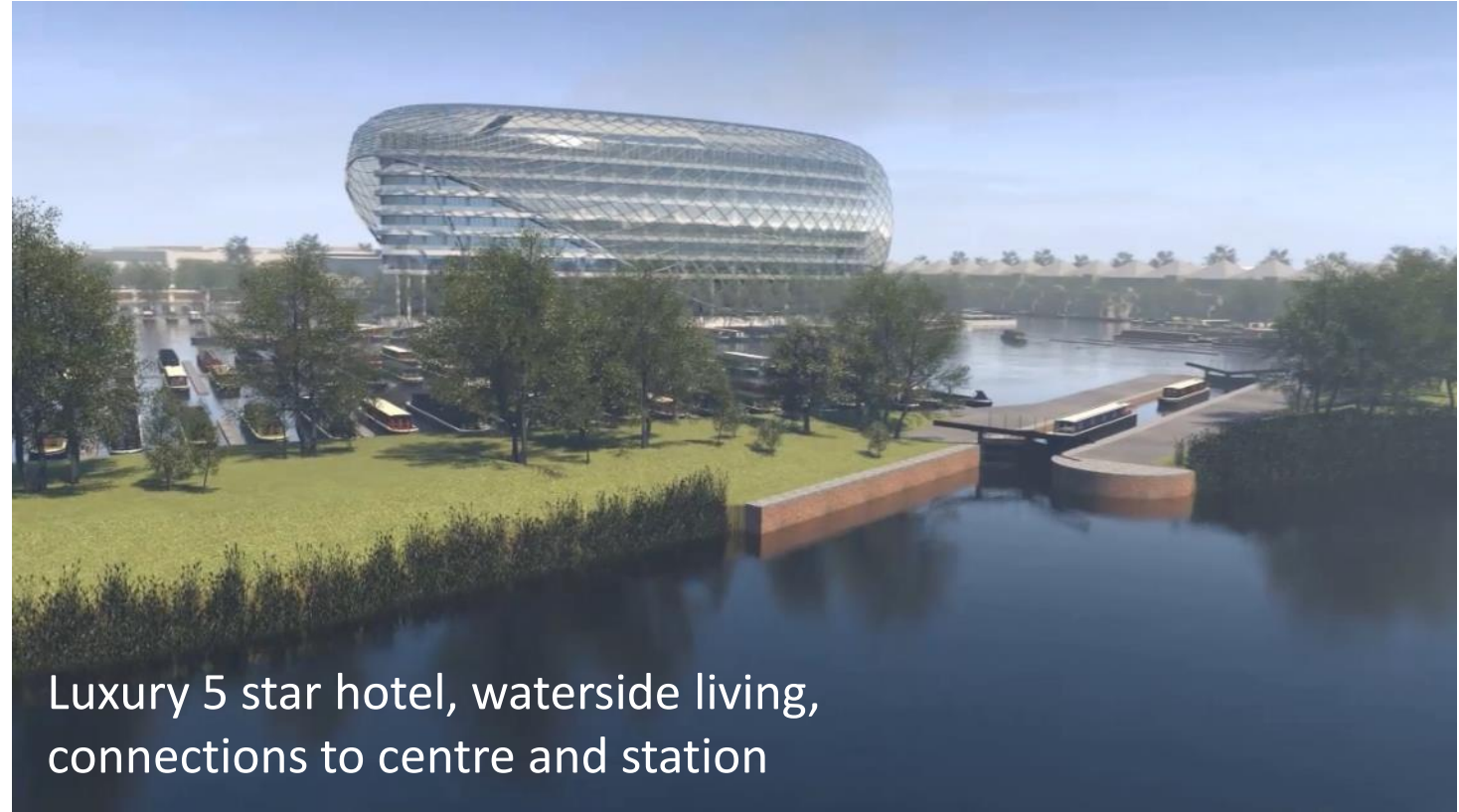
Derby River Basin

Central and tranquil waterside living



Mercia Marina (10 miles away)

- Largest inland marina in the UK
- Awards for nature conservation
- Economic **development** through office and retail space
- Part of the community – café, walks
- Continually expanding to become a destination



Luxury 5 star hotel, waterside living,
connections to centre and station



City Centre

Improving the city centre using waterways



“This canal restoration project will result in a revitalised Derby city centre and a waterfront which will attract visitors, wildlife and major investors like it has in Birmingham”

James Burleigh, Chief Ambassador, Merlin Entertainments Plc

Birmingham

- Urban regeneration driven through dense canal network
- Canals are part of Birmingham’s Heritage and identity
- Attracts 1000s of visitors each week making use of canalside restaurants and cafes as well as boat users
- Also Leeds, Manchester, Bristol, etc.



What impact will it have?



“For every **£1** spent
the local community
see a **£7** return on
investment”

“Property prices increase
by approximately **20%**
when a local canal is
restored”

Water Adds Value

https://www.youtube.com/watch?v=dg0B_2v-bLk



Changing Derby

- City Living will bring residents to the city centre.
- Water activity gives vibrancy to the city centre attracting all ages
- Riverside development will attract more visitors to use shops, museums, etc.
- Heritage will generate wealth
- We are a UK city of innovation, we won't just catch up with other cities we will overtake them.
- We can do it together



A photograph of a large, multi-story brick building undergoing renovation. The building is heavily covered in scaffolding, and its roof appears to be partially removed or in the process of being replaced. In the foreground, a worker wearing a high-visibility yellow jacket and a hard hat stands near a chain-link fence. To the right of the worker is a large, yellow, rectangular storage container. The ground is covered in dirt and debris. A large, leafless tree stands to the right of the building. The sky is clear and blue.

Progress so far

We've rebuilt bridges



*Swarkestone, near to junction
with Trent and Mersey*



We've installed culverts



City Point, Derby

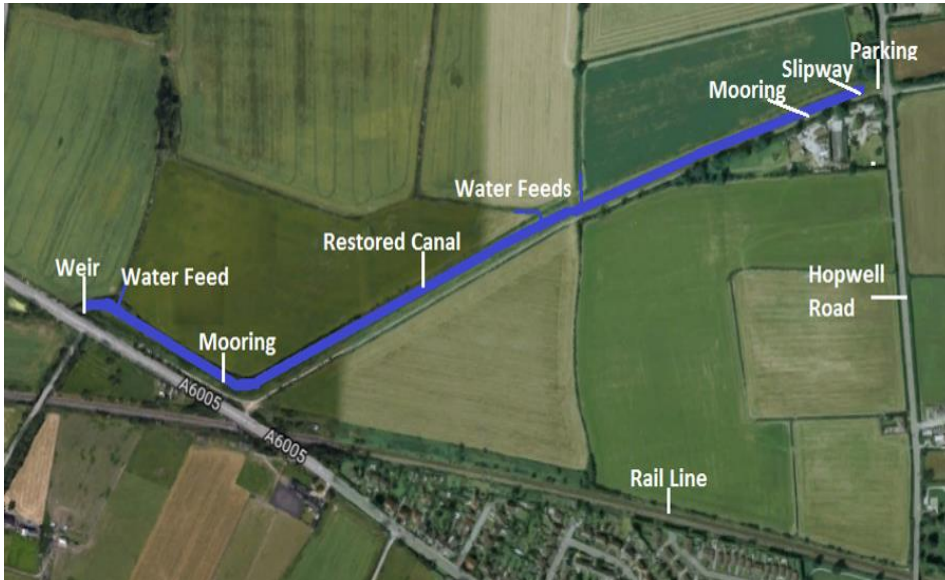


We've restored locks



*Locks at Borrowash
and Sandiacre*

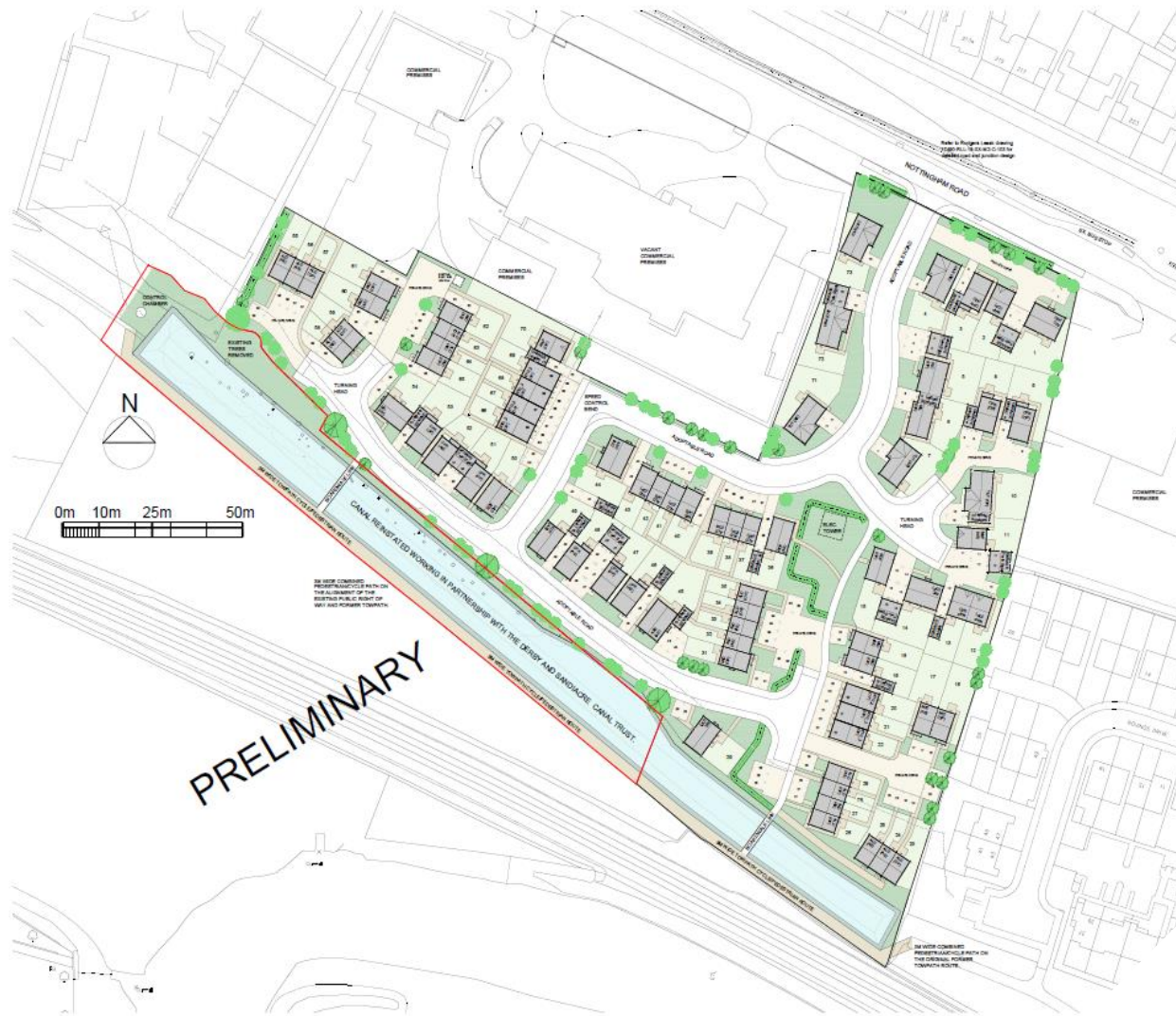
We're Restoring the Canal at Draycott



- *Ditch dug with Railtrack in 2000*
- *25% of funding already committed through public donations*
- *Planning Application in Process*
- *1100 metres long*



Collaborative Partnerships



Working with forward thinking housing developers like **Wheeldon Brothers Ltd** to create high quality waterside accommodation alongside the restored canal in **Spondon**



Draycott Canal Cottages

Built **1815** as a mill, then converted to farm cottages:

Our restoration provides:

- three cottages
- community space (a café and museum displaying the heritage)
- A centre for the Trust and office space for a small business
- development gains which can be reinvested back into the canal project





The future vision for Draycott Cottages

Important Milestones

- We have Outline Planning Consent
- We now own 6 miles of the line
- We have control of 94%
- We have water abstraction rights
- We have support from residents, Councils and employers



Derby Riverboat *2020 Launch*



Derby Riverboat

In 2020 the Derby and Sandiacre Canal Trust will be introducing a passenger trip boat to the river Derwent.



Overview

- Designed and operated by DSCT
- Aimed at local families, residents and tourists
- Engages with river bank/nature
- Signposts the Silk Mill
- Education of Derby's history and achievements
- Funded through D2N2 with support of Derby City Council

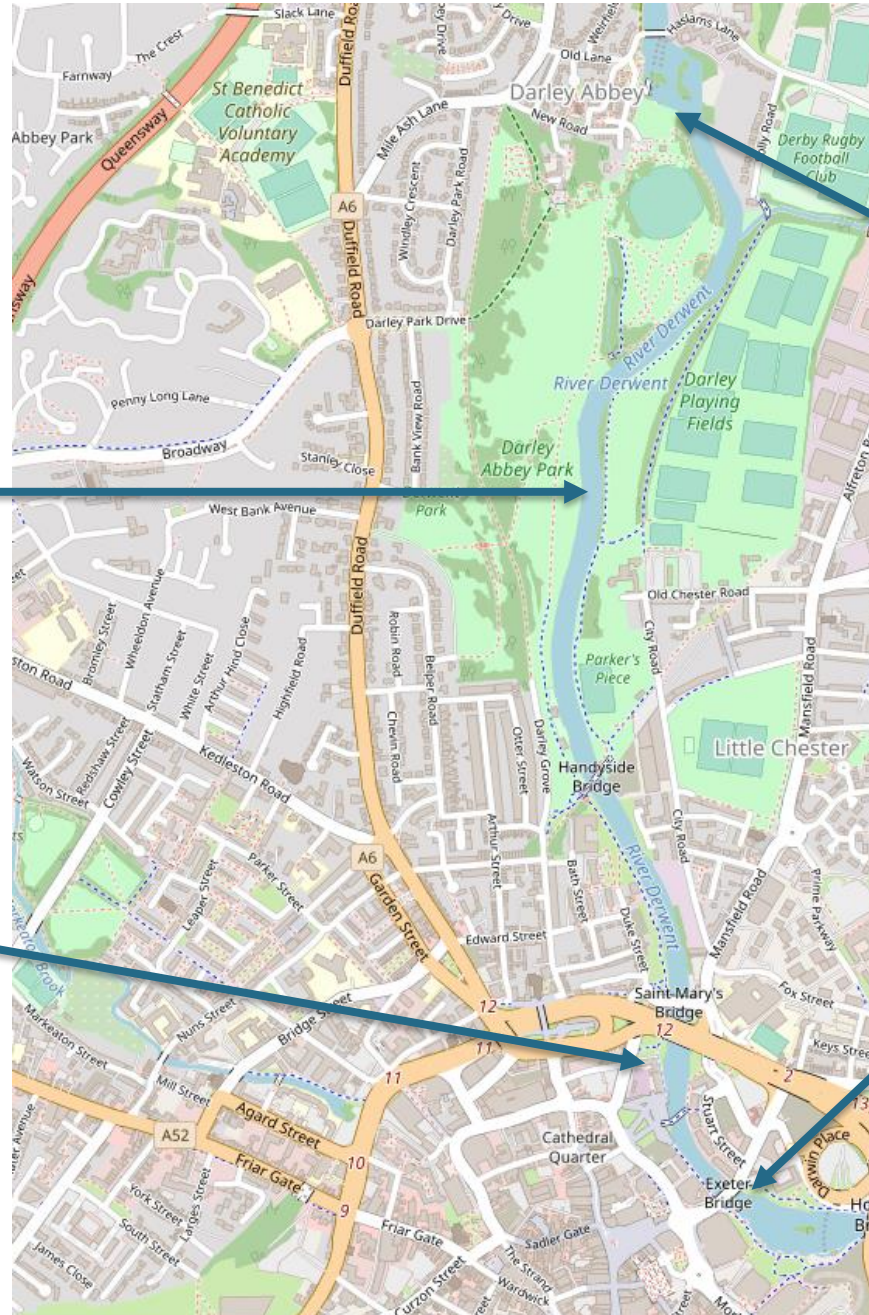


The Route

DARLEY PARK



THE SILK MILL – UK Museum of Making opening 2020



DARLEY ABBEY MILL turn around point



PASSENGER BOARDING PLATFORM AT EXETER BRIDGE adjacent to Brewery Tap



Boat Design

Key Features

WHEELCHAIR
access via
electric lift.

LARGE WINDOWS to
optimise natural light
and view out



GALLEY and CAFE
Serving light
refreshments



ELECTRIC DRIVE
Ultra quiet, zero
emission propulsion

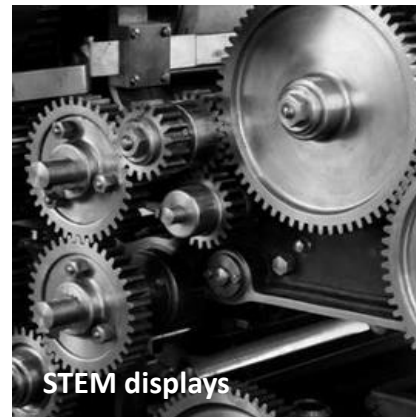
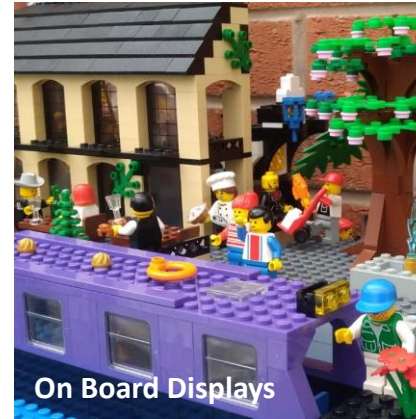
SOLAR PV PANELS
Tops up the batteries



On Board Activities

The following on board features are ready to go or being worked on:

- **Audio Commentary:** 16 tracks, automatically synchronised with route, covering topics such as Florence Nightingale, John Flamsteed, Roman Derby and Derby's impact on the world.
- **Children's Activity Packs:** 5 Activity Packs completed and ready to go
- **Plastics Recovery Robot:** Under development by a team of Rolls-Royce graduates. Will allow children to steer the robot via remote control from the boat and collect plastic from the river.
- **Interactive STEM displays:** Rolls-Royce 2018 project, 3 wooden displays which teach children about how a lock works, how the boat lift works and how the Millennium Swing Bridge Works + jigsaw
- **Lego model of Derby Waterfront:** Complete. Will be integrated into display case on boat with push button interaction



Future Expansion

Improvements Year on Year

Derby River boat launch 2020

More frequent service

Stop at Darley Abbey

Work with the Silk Mill and Develop Cathedral Green

Special Events / Dining Trips

Lock in the weir and connect to Pride Park

Connect to Derby Arm and Canal



The river boat under construction (Oct 19) but this is just the start of Derby's Waterside Potential



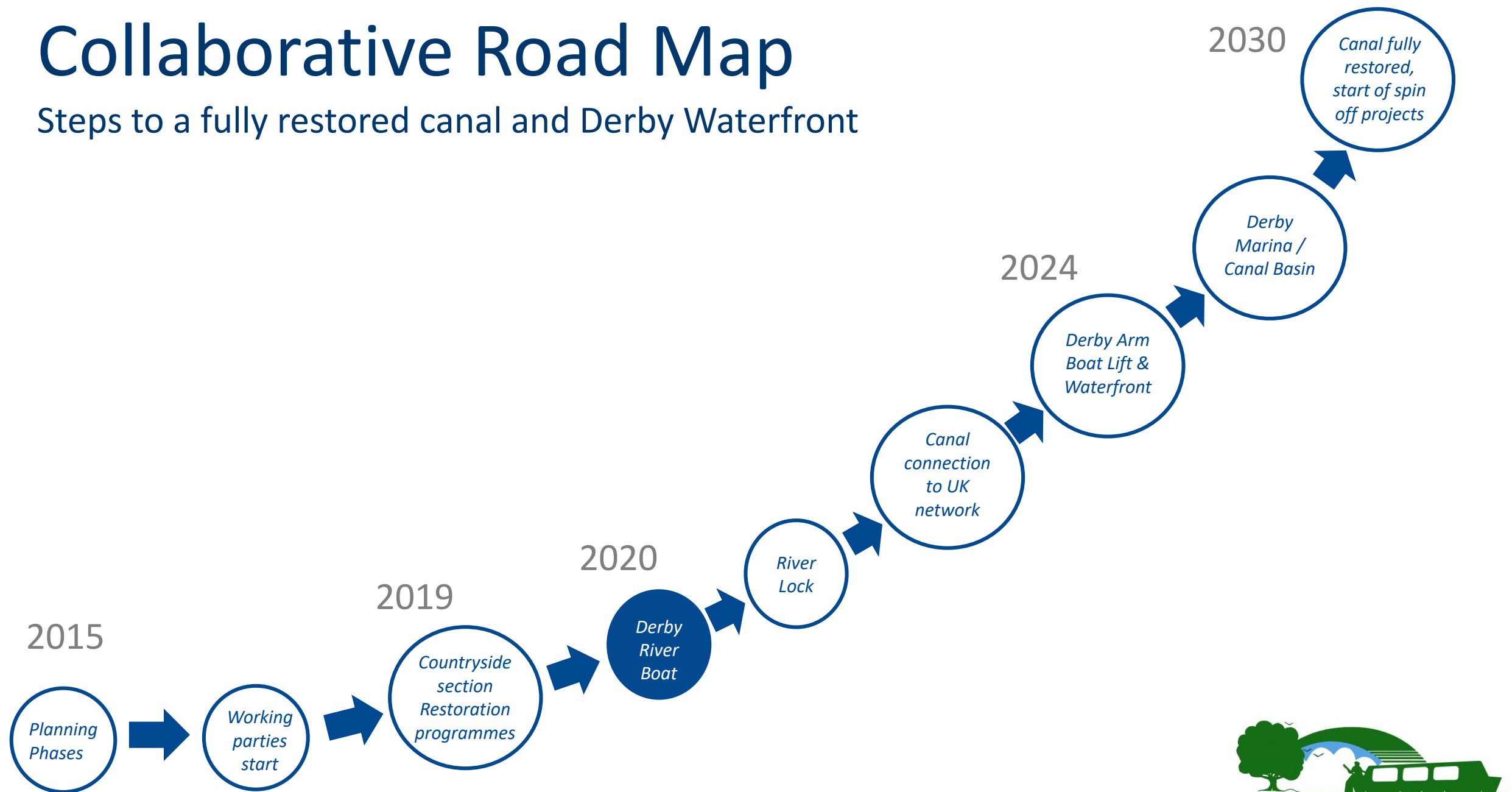
The Future

A vibrant city connected by its waterways and to its heritage



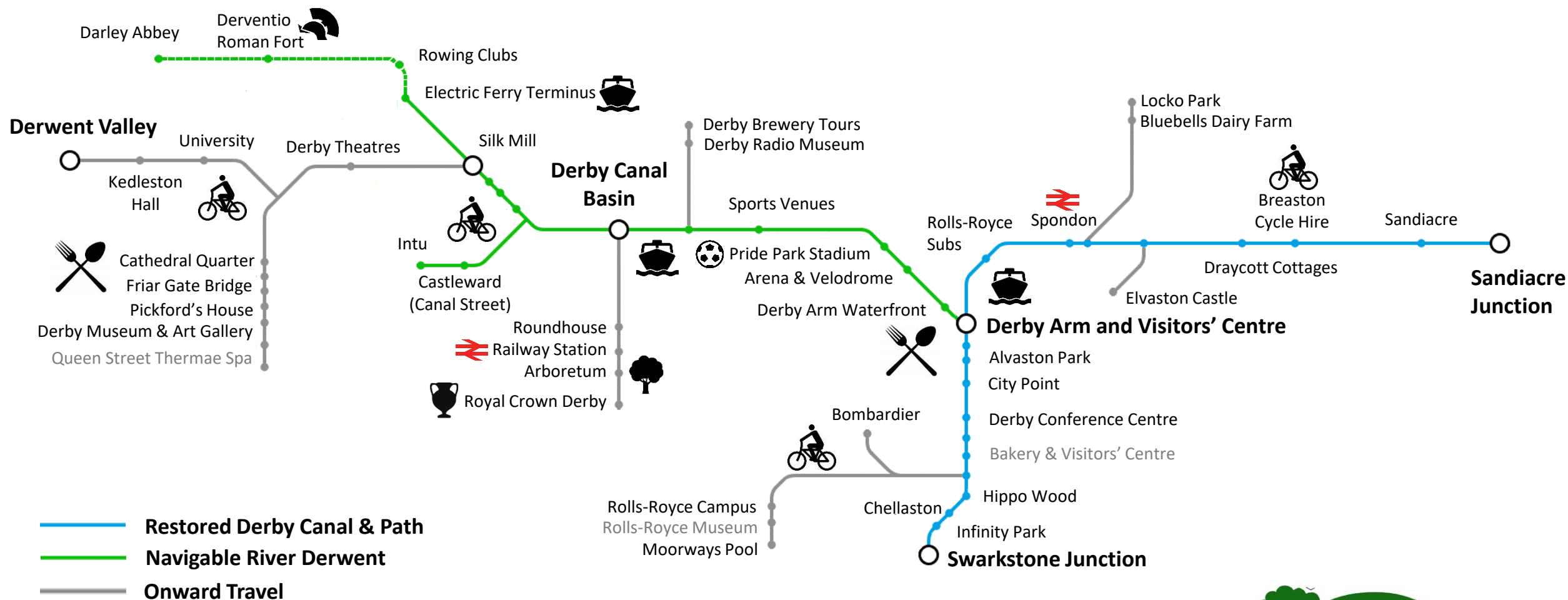
Collaborative Road Map

Steps to a fully restored canal and Derby Waterfront



Tourist Map of Derby

Connected by the Waterways



Our Supporters

“Derby has played an important part in the history of Rolls-Royce and plays a vital role in our future. We are continually investing in the city and surrounding area and this is why I am excited by Derby and Sandiacre Canal Trust’s plan to create a boat lift on Pride Park. I believe this will further enhance the attractiveness of both Pride Park and Derby as a great place to work.”

Ian Campbell, Group Property Director, Rolls-Royce Plc



“The Derby Canal restoration project is hugely important because it brings people into nature in a way that was invented by humans. To be able to restore this superb watery artery will bring life, beauty and inspiration to all who will use it and, if our experience at Eden is anything to go by, it will create very significant long term economic and social benefit and the most valuable gift of all-memories”

Tim Smit, CEO, Eden Project



“The Derby and Sandiacre Canal Trust’s plans to begin a boat service on the River Derwent will help to reconnect our home city of Derby to its river. We wish the project every success, and look forward to the development of its longer-term plans for canal restoration”

Richard Hunter, UK Managing Director, Bombardier Transportation



“Hailing from Derbyshire as I do, it’s always heart-warming to see regeneration projects such as this taking place. The Derby Arm Boat Lift and the transformation of the riverside will not only enrich the lives of the community, but also open up opportunities for restaurants to pepper the water’s edge.”

Sat Bains, Two Star Michelin Chef and Restaurant Owner



“We’re excited at the prospect of having a waterfront scheme in Derby which hopefully encourages further investment in the city and surrounding region, provides local residents and visitors with another landmark attraction, and inspires the next generation.”

Stephen Pearce, CEO, Derby County Football Club



“This canal restoration project will result in a revitalised Derby city centre and a waterfront which will attract visitors, wildlife and investors. Derby’s future potential is vividly demonstrated in Brindley Place, Birmingham, where the beautifully restored canal system has stimulated adjacent development in both commercial and leisure sectors. This is something that we hope the Derby and Sandiacre Canal Trust can emulate as part of its own exciting project, we are watching with interest.

James Burleigh, Chief Ambassador, Merlin Entertainments Plc



“The restoration of the Derby & Sandiacre Canal is an exciting opportunity for local residents; not only will it create a more attractive area to live and socialise, but it will also develop natural habitats for wildlife – something we at Toyota are strong advocates for – restoring our own site with wildlife corridors. We are looking forward to the exciting next phase of development”

Nick Freeman, Assistant General Manager, TOYOTA MOTOR MANUFACTURING (UK) LTD

