

# *The Packet*



*Issue 78*  
*Autumn 2015*



## **Contact the Committee.**

The committee meets on the second Monday of each month at 7.30pm at The Coach and Horses, Victoria Road, Draycott, DE72 3PS. Thanks to Mark and staff for provision of facilities (and access to real ale). Feel free to attend as ANY help or interest is always welcomed.

**Chairman:** Chris Madge.  
62, Broadway, Duffield, Derbyshire, DE56 4BU.  
**Email:**chair@derbycanal.org.uk  
**Tel:**01332 840502; 07827 946444

**Vice Chairman** Paul Birtles.

**Secretary:** Anne Madge.

**Membership:** Roger Ashmead.  
172, Sandcroft Road, Spondon, Derby, DE21 7LD.  
**Email:**membership@derbycanal.org.uk

**Treasurer:** Chris Rees FitzPatrick.  
**Email:**treasurer@derbycanal.org.uk

**Working Parties:** Eddy Case.  
**Email:**coordinator@derbycanal.org.uk  
**Tel:**07523 896645

**Editor:** Doug Flack.  
**Email:**editor@derbycanal.org.uk

**Social Secretary:** Position currently vacant.

**Full details of the committee can be found on our website**  
**[www.derbycanal.org.uk](http://www.derbycanal.org.uk)**

Chris Madge and Chris Rees FitzPatrick are also directors of the Trust and can be contacted on the above details.



# **Barn Dance at the Canal Turn**

**Friday 20<sup>th</sup> November from 7.30pm**

Come to a hoe down in Spondon to celebrate  
(and fund) the completion of the winding hole.

Do-si-do and Strip the Willow with Derby's very own  
Ceilidh Band "Speed the Plough"

**Price £7.00 for adults**

**£5.00 for children 11 and under**

Bar and food available to purchase separately

Canal Turn Pub, Station Road,

Spondon, Derby, DE21 7NE

(Formerly the Moon Pub – renamed to recognise the work we're doing)

**For Tickets contact Chris Madge**

**01332 840502**

 @Derbv Canal   [www.derbvcanal.org.uk](http://www.derbvcanal.org.uk)  \derbvcanal.org.u



## **Words from the Chair**

Welcome to the summer edition of the Packet. We're running a little late this time as things have been so busy. If we continue to progress like this I may have to change the title!

I'd like to thank members of the committee who have as always given tremendous support to the Society and enabled Chris RFP and me to spend a lot of time moving forward the restoration with the Trust. In particular Eddy seems to take on new responsibilities every month – he's now focussing our press releases and spraying knotweed in addition to his established remit with working parties, and in addition our newest recruit Emma has taken on Communications with relish. She does this whilst on maternity leave, which means she now has a very young daughter to care for as well as a bunch of committee members. She's obviously well qualified. You'll be able to judge their substantial impact when you read their articles later in the Packet.

## **Restoration Developments**

### **HS2**

We have now heard that HS2 will indeed be going to Toton rather than cutting our route at Breaston. All the regeneration evidence pointed that way, but it is good to be able to relax over this issue now. All the more reason to get digging as it makes it more difficult for these diversions in future.

### **Sandiacre**

Activity around Sandiacre has been substantial over the months since the last report. You may remember that HLF suggested an initial smaller project designed to firm up costings for restoration of bottom lock, involve the local community, establish partnerships with key stakeholders and prove our capability to manage money for them.



Since the last Packet we have discovered from Erewash Borough Council that Planning Permission will be needed to excavate a lock and David Hayes (our resident planning expert) has submitted the application. This has provoked a request from EBC to sample the spoil prior to extraction. Whilst the current request for 15 samples seems excessive we will benefit from discovering before we start if we have toxic spoil. We have obtained a reasonable quote from a local company that we met at the Breaston Gala this year in readiness.

We originally planned to refill the lock after investigation to make it safe, but EBC require that we quarantine the spoil if there is any toxicity and apply for a waste handling licence so we can put it back into the lock. We thought refilling would be the easier and cheaper option, but we are now working towards disposing of spoil permanently and leaving the lock open. So the preferred plan is to excavate by digger down to about 2 feet from the bottom and then undertake an archaeological "dig" in the bottom looking for artefacts from the last two centuries. We will assess the damage done by the sewer, but not leave the pipes exposed, repoint and repair the chamber and erect a solid fence to allow the public to view it safely. We are currently gathering costs for this work to include in the bid from local companies and will blend this with WRG/local member resources to deliver the work.

We have appointed a specialist consultant to help us write the HLF application and this is progressing well. We anticipate that HLF's timetable will allow us to complete the excavation in the spring next year, if our bid is approved. We have now worked up an approach to involve local people, which includes:

- surveying local people to understand the level of support, what they would gain from the project and how best we could promote and describe the activities.

- attending the Long Eaton Carnival and the Hayworth Road Park Funday and canvassing views. We proved that we had an overwhelming support for restoration and even received a number of names interested in helping us on working parties for the project. You can help us by completing the questionnaire on line at <http://derbycanal.org.uk/survey/>
- contacting local schools to identify what resources we could provide for them and their teachers
- identifying some people who were involved in canal life and agreeing with them to record their personal oral histories

To support all this work we organised a June working party to locate the lock's position. We achieved this and believe that the sewer has cut through the gate recess and wing wall of the lock.



I was both amazed and encouraged by the number of people who stopped to talk and find out what we were doing. We were also joined by Norman Cornwell, the new Chair of the Erewash Canal Preservation and Development Association, together with Shirley his wife. My comments in the last Packet referred to the CRT HLF bid, which upset some members and for which I apologise. Despite this Norman believed that the ECPDA would be willing to help us with the project and we have written to formally ask his group to consider this. The ECPDA has considerable experience and some equipment that would be of great help to us and we welcome cooperation on this or other projects.

Following the election we have had further meetings with the new MP for Erewash, Maggie Throup, who publicly pledged support for the project and has agreed to join the Trust to join with Wayne Major, who now represents the County, Borough and Parish. I'm sure this will be of great help to the project.

## **Spondon**

No news on the Spondon development although the Council have offered to discuss progress with the developers to see if it can be moved on.

The new Canal Turn pub opened on 17<sup>th</sup> July on Station Road, Spondon. Following our conversations I am happy to say that the new owners have now tidied up the winding hole and fenced the area. We arranged a visit by the IWA Civil Engineer, Howard Worth in July and we now have appropriate guidance on the wall repairs needed. Of course when he visited us (from Telford) we showed him all the issues on the route and we had a very fruitful and pragmatic day, which should set us up for the future. At Spondon it is now down to us to finish the job. Eddy is organising working parties to get this completed before the Autumn. Volunteers welcomed!

## Partnering with the City Council

As you will recall we have been investing time in regular meetings with Derby City Council. This has resulted largely from the challenges brought about by the change in approach to the Chellaston T12 crossing. At Chellaston the access road is well developed and currently cuts off the canal route. As a result of this meeting we now have a formal letter of support from the Chief Executive for the canal, specified conditions when they will raise funds to rebuild the bridge at T12 and support for the Derby Arm the key lines from this letter are

*"I am writing to express the Council's support for your efforts to restore the canal over time in its entirety. The canal not only has an important place in Derby's history but is also an important recreational, environmental and, in its widest sense, economic development initiative.*

*The Council's commitment to your work is enshrined in planning policy which supports the restoration and new canal construction along the line of the former Derby & Sandiacre Canal and via the Chaddesden triangle and the River Derwent to the City Centre.*

*I would like to confirm that at the point you have the funds and consents in place to open up the section of the canal from the Swarkestone Lock up to Sinfin Moor Lane, it is our intention to create a bridge to take the new road ('T12') across the canal. This commitment is of course subject to the availability of funds and the necessary formal Cabinet approval at the time. It will no doubt be necessary to seek external funding through whatever sources may be available. The council has a good record in bidding for funding and no doubt it will be necessary for us to work together closely to ensure that any bid is as robust as possible"*

The letter in full can be viewed on our web page <http://www.derbycanal.org.uk/dcc>

Formal agreement for a grant has been signed and we expect to receive the £60k towards the restoration shortly. These funds have been earmarked for the Pride Park and Derby Arm development and we are making progress on this front.

We have now presented our plans to the deputy leader of the Council, Martin Rawson, and received encouragement to present to the whole Labour Group in early August. Steve Jeffery has already ensured that the Arm is featured in the 2030 Masterplan for Derby and if we can show the Council leadership that the project will assist their aims for the redevelopment of Derby and particularly the river it will help the project enormously. The City is a key part of D2N2 an organisation with government funds to generate jobs, growth and infrastructure and we would like to access this fund in the future.

In the meantime the Council's Regeneration team have offered assistance in discussions with developers and regarding the river with the Environment Agency and with Highways. The development of "the Chaddesden Triangle" will generate more traffic and provision needs to be made for extra vehicles by enhancing the roads onto Pride Park. We have met with the developers, St Modwen, and are now working on drawings for the Derby Arm site development, which will enable us to establish an economic case and then gain inclusion on the overall site plans. The support of the Council will be very helpful in discussions with all parties especially the developer.

## **Marketing Derby**

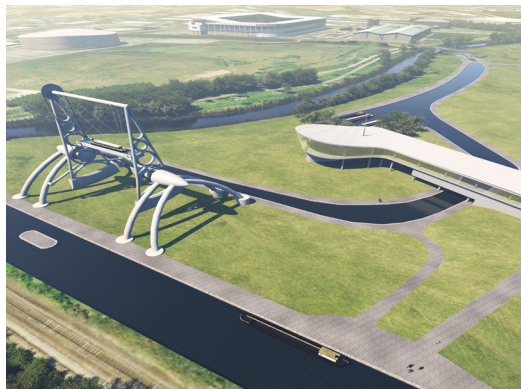
In a meeting with the City Council we were advised to join Marketing Derby. This comprises 250 organisations that work for the development and betterment of Derby. Our first meeting was to hear the tremendous news that the Silk Mill has been awarded £9m of HLF funding to establish an interactive museum. The presentation showed just how much effort is required to present the case comprehensively, but is encouraging for us as we recognise the synergy between the two projects and would love to add to the spectacle at the Silk Mill with boats delivering new visitors.

At this meeting we met a few interesting contacts including the College of Business at Derby University. We have now discussed with them involvement of their students in business related projects, especially raising finance and assessing the business case for the Derby Arm. We are awaiting a reply as I write, but the Trust is keen to continue to develop relationships with the University following the involvement of Engineering students a couple of years ago. We believe this not only provides answers for us at minimal cost, but also involves the younger community that we will need as the restoration gathers pace.

We are also promised a meeting with Derby County Football Club, who are obviously very close to the Arm site and showing an increasing interest in Derby's development. The Arm would of course provide a third element attracting visitors to that area in Pride Park.

### **Canal and River Trust**

Fellow Trust Director from the IWA Mike Snaith and I attended a workshop organised for restoration groups by the IWA with CRT in Birmingham in May. As I have previously mentioned, CRT are now actively supporting restorations such as



ours and together with the IWA presented technical updates on fundraising, canal linings, WRG, and the European Water Framework. All of this is knowledge combined with contacts that will be useful in due course. Following on from these meetings DSCT have been invited to send our Project Manager to join the National Waterways Restoration Group, which meets every six months and sets the agenda on restoration. We welcome the opportunity for networking and discussions with managers on projects more advanced and larger than our own.



## **Water Supply**

We met with the Environment Agency in March in a meeting sponsored by Pauline Latham MP in Spondon. The EA advised that we could transfer rights from Celanese, but informed us that a large proportion of the existing rights were non consumptive. As we expect to “use” the water we take by sending it down to the Trent and Mersey/Erewash canals, so the offer discussed with Celanese for an amount which would be small in comparison with existing rights, but major for us is now in some doubt. We’ve therefore reviewed the requirements for our canal to see what we really need and hope to agree with Celanese a smaller amount that still allows them the flexibility they will need when the land is finally built out. Whilst it is unlikely they will need much for domestic housing, no-one can preclude the need of any industrial concern that might move to the site. Celanese have been very helpful to date and so we are optimistic of a reasonable outcome.

## **Other Matters**

As you will have heard in the press the electrification of Network Rails lines has been “paused”. We await the next step by Government, but are concerned to see this project restarted as it will give us an opportunity for help in managing contact with rail lines at Raynesway and Pride Park if they are realigning their track.

We have not been able to make progress in our discussions with Russ Godwin on the purchase of the land at Swarkestone as the price asked is too great for it to be economically viable for us. This is not a critical piece of the line and has been very leaky throughout its life, so we will not be pursuing this option further and will instead concentrate on the alternative route through the farmer’s culvert.



## Society Update

### Events

We started our events season as usual with a beautiful day at Breaston in early May and we tested out some new merchandise. As usual there was a great deal of interest in progress and we signed a number of new members and made some contacts and offers of help that we are already using.

We followed up with my favourite activity of the year at Swarkestone Lock. Unfortunately we weren't able to coincide with the local nursery's big event, but we raised some funds and promoted the canal in beautiful weather assisted with tea and facilities by our friends at Swarkestone Boat Club. A much better result than the three days at Crick that we suffered last year.

We tried to ring the changes a little this year and attended the "Big One" at Chaddesden, but we had mixed results. It was obvious that the Council put a lot of effort in, but our positioning didn't help us much and there was very limited interest from the crowd. Still, nothing ventured.....

We were asked by the organisers of **Long Eaton Carnival** to attend this year, but had to consider it carefully as it clashed with the Spirit of Chellaston event that was so successful for us last year. We wanted to try it out as we wanted to test the reaction locally to our restoration, particularly with the planning now going into digging out the Sandiacre

Lock. So the call went out and despite the holiday season we had 8 volunteers on the day and everyone worked their socks off. As a result I think we got some brilliant feedback and made a big impact on the Long Eaton public.



We always set up our information boards and shop and run "Play your Cards Right" and "Spot the Kingfisher", but we decided to be more ambitious and use the opportunity. Firstly Paul and Jackie had upgraded our half size boat so it was in pristine condition and had added roses and castles and harlequin designs at the front and back. We towed the boat in the 2 hour long street parade and it made a real impact with the thousands lining the route. The crowds were all pointing out the boat to their children and talking about the canals locally. We had lots of waves from the crowd and the supporters walking alongside reported good levels of interest and questions and handed out around 200 leaflets to interested parties.

At the stall we added a survey for the adults and got the kids to draw us some great pictures of canal life with boats, happy people and lots of wildlife. 22 people completed quite detailed surveys telling us what they wanted from the restored Derby canal. Almost all were very supportive with ideas about how we should communicate the story of the canal; many offered to help in the working parties, especially when we open up Sandiacre lock and we even had a relative of Jim Boswell one of the boatmen in the famous picture of Atlas and Vela in Sandiacre Lock. We are looking to capture his story and it would be brilliant if he and Ike Argent could record some relevant anecdotes and history to use in a listening post. And we had an extended visit from the local MP, Maggie Throup who has offered to support us by joining our Trustee Board.

I estimate the event attracted 10,000 people as the show ground was very busy for at least 3 hours and most of them passed our tent and took an interest. Well worth all the effort by our volunteers.

Following on from this success we also attended the Haywood Road Park Funday, a much smaller and more friendly affair and at which we were able to talk to lots of people about the lock opening only 400 yards away. As a result we received offers to help, names for the oral histories - including the guy that filled it in! -and lots of questionnaires.

## Meetings

We have had some terrific speakers this year to date including a somewhat macabre, but most entertaining and informative look at the Fossdyke in March, a talk by Eric Boulton from the Ecclesbourne Railway in April, which gave us lots of ideas on how to raise funds, followed by a talk on the Uttoxeter Canal that was fascinating and probably at a similar stage as us in development and in July a touch of humour from the Magistrates Bench, which was very well received.

In June David and Derek entertained us with a walk - the last piece of the jigsaw in their series of walks- showing the A6 to city stretch and plans for the Derby Arm.

Meetings are held on the fourth Tuesdays at the Wilmot Arms, 49 Derby Road, Borrowash from 8pm. Members £2, other £3. The next meetings are:

August	No meeting
Sept 22nd	Geoff Pursglove on the Ashby Canal Walling
Oct 27 <sup>th</sup>	AGM including an update on our Working Parties activities this year.
Nov 24 <sup>th</sup>	Anthony Poulton-Smith on Derbyshire Place Names
December	No meeting
Jan 26th	Jane Whitaker - Derby Slums in the Nineteenth Century
Feb 23rd	Dave Thomas (CRT) - The Anderson Boat Lift
March 22nd	David Bell - The Plague Doctor, Remedies of the Past
April 26th	Paul Sturges - Derby in the 1950s

## AGM Notice

The agenda for the AGM will be posted on our website. Please note that existing officers have offered to stand again, but that we are looking for a social secretary to assist with meetings such as the barn dance. Please talk to a member of the committee if you are interested in any position or can offer help or stand for vacant positions on the night.

## Membership

Roger has been actively managing the members database and with the additional members he has been able to get on top of subscriptions, etc. We have been looking at a direct debit system, which would make renewals more straight forward for us, particularly when monthly draw subscriptions are involved, but we have had a few teething troubles which Chris is working through. So watch this space. I know Roger is keen to ensure we have email and other details up to date. As many of you know I send out a monthly reminder and we take care to keep the email addresses up to date. So if you change yours please drop an email to me or to Roger and we'll keep you on the list.



The Route of the Derby Canal.

For the benefit of newer members, we are including a series of maps showing where the canal was and where we propose to rebuild it.



The blue line running north shows the original route and the green dots show where it will most likely be. The green route is considerably lower than the blue to take into account the necessity to pass under the A50, a culvert for which was refused by the DfT when the road was constructed. The Trent & Mersey runs left to right.



## **Lest We Forget**

We have received a request from a keen member of our working parties, Peter Blood. We are all remembering the anniversary of the Great War at present and we would like to plant up an area of the canal line with wild flowers. If any of you have dried seeds available for planting, especially native poppies we will be sewing them next year in the spring.

You can help with this. How? Well by saving seeds this Autumn from plants in your garden if you have plants that can survive in the wild let them, dry thoroughly and put them in BROWN paper envelopes label them and then pass on to a Committee Member at the monthly meeting or contact Eileen by E-mail at [egholland@talktalk.net](mailto:egholland@talktalk.net).



# Puzzle Page.

## Derby Canal Word Search

P	N	L	O	W	F	M	V	A	W	U	Y	N	G	S
H	I	O	H	V	I	Y	K	D	E	R	B	Y	G	W
N	R	B	K	N	O	W	Y	C	W	H	K	W	B	A
R	E	S	T	O	R	A	T	I	O	N	E	J	P	R
N	G	D	Y	G	S	A	N	D	I	A	C	R	E	K
O	H	G	E	X	A	J	I	B	Z	O	Q	S	R	E
D	C	E	G	R	Y	W	O	V	U	Z	H	E	Y	S
N	R	B	F	V	B	R	K	H	J	T	Y	G	B	T
O	Z	E	Y	L	R	Y	G	T	B	T	B	E	O	O
P	I	H	K	O	A	F	A	F	F	O	Q	D	H	N
S	O	U	W	H	R	N	B	R	J	C	P	V	U	E
N	Y	A	S	E	S	M	A	P	M	Y	D	Z	H	R
D	S	U	S	V	S	W	Q	C	H	A	V	A	P	U
H	E	B	J	L	U	I	C	P	R	R	X	G	N	G
N	O	T	S	A	E	R	B	W	D	D	O	Y	Q	C

Swarkestone, Derby, Spondon, Borrowash, Draycott, Breaston, Sandiacre, Canal, Derbyarm, Restoration

## Easy Sudoku

3			4		8			9
2	6	8				4		
		1					2	
1	2	3			4	5	7	
4		5		3	6			
			2			3		4
	9		6	1			3	
7			8	5		2		1
8			7					



## **Working Parties.**

I left you last time with 105 meters of hedge to lay at Draycott, not any more! In January and February we managed to complete the hedge laying (5 years of work and over 1000 meters of hedge laid) we also repaired one of the larger notice boards that had fallen down at Draycott, and due to the increasing numbers of helpers we also had enough hands to rescue some of the larger stones at Spondon, to be used at a later date.

Our gallant band of helpers at Borrowash have never stopped, they are out most weeks, cutting, tidying up and making the area look a lot better for all, we thank them all for the continued support that they give us.

March saw us with an unusual request from the local Parish Council at Draycott to install some form of safety netting for the bridge that runs under the main road at Draycott, as usual, no problem too big to resolve, and a grateful thank-you was received to all concerned. Work teams also attended at Borrowash top lock, and again a week later along the full stretch to help out with heavier cutting and clearing.

April – again we had a call out to Draycott, this time a hazard to pedestrians who walked along the main road over the bridges, brambles cutting at legs and not nice for young children and animals. We started to trim, but in the end decided to clear the lot out ( this would also help the on-coming battle of the JK).

May – One of our regular shows, Breaston Carnival. A wonderful day out, good weather, a record number of new members signing up on the day, you should try joining us for one of these days, you get to meet a lot of nice people! May was also the start of the Japanese Knotweed offensive, our man in the white suite that walks around with a heavy back-pack on and full chemical protection gear attended the battle field and set to work. Our trouble with this is that no-one has yet to obtain a photograph of him, is he to become the Stig of the Canal Society? We have been told that he will re-appear at another date.

We also attended our annual "lock thru" at Swarkestone on Bank Holiday Monday, aagain we had enough helpers which meant we could also man a stall at the local garden centre, who kindly donated the space free of charge.

June was already, a busy month, lots of people away on holiday and lots of commitments. 7th saw us at the Big One at Chaddesden. the 23rd was our annual Derby Canal Walk, well attended once again and on the 25th we attended the Long Eaton Carnival, a nice way to introduce us to lots of new people from the local area that is very close to Sandiacre, estimates are that over 10,000 people attended.

Work has also been done at the Sandiacre bottom lock to check the exact location ready full a full excavation soon, details to follow later on this subject.

Things are not going to get any less busy, more help would be gratefully received to spread the load, we are getting nearer and nearer to water, help us to keep the current momentum going, any help is really appreciated and trust me, ITS FUN!

Eddy





# GARDEN MAINTENANCE

## Domestic & commercial

- General maintenance
- Planting
- Turfing
- Lawn care
- Seeding
- Drive & patio cleaning
- Tree pruning
- Borders

## Weekly & fortnightly contracts

- ✓ GNVQ level 1&2
- ✓ Horticulture & Landscaping
- ✓ Fully insured



A friendly service at competitive rates

Call **07513 989 686**

## THINKING OF BUYING A CARPET????

THE LAST TIME YOU HAD A CARPET FITTED

Did the Fitters cut your  
doors FREE OF  
CHARGE  
**WE DO!**

Did the fitters MOVE your  
FURNITURE WITHOUT  
CHARGE  
if you could not manage  
**WE DO!**

Did they TAKE YOUR  
OLD CARPET UP if you  
couldn't manage  
**WE DO!**

WERE THEY ON TIME,  
POLITE and BAG up all the  
WASTE afterwards  
**WE DO!**

Did they do a  
**GOOD JOB**  
**WE DO!**

Was the fitting STILL FREE  
even on the cheapest  
carpets and Vinyl  
**OURS IS!**

Did the shop offer to  
BIND any WASTE into  
MATS & RUGS for you  
**WE DO !**

If you weren't  
SATISFIED in any way,  
did the shop put any  
problems right to your  
satisfaction  
**WE DO!**

**Furniture at below  
City  
Centre Prices**

**FREE  
DELIVERY  
on all items**

THESE ARE JUST A FEW REASONS WHY OUR FAMILY FIRM HAS BEEN  
ESTABLISHED OVER 40 YEARS ON RECOMMENDATION ONLY.  
**PLUS THE BEST ALL-IN PRICE WITHOUT INFERIOR UNDERLAY &  
ACCESSORIES.**

*FREE HOME ESTIMATE & SELECTION*

**Chaddesden Furniture & Carpets**

**637 NOTTINGHAM ROAD, CHADDESSEN, DERBY TEL: 01332 674638**



## Retail and Trade Suppliers of Canal and Narrow Boat Equipment

Midland Chenders has been established for over 35 years and is the market leader in the supply of equipment for inland waterways craft. We have four well stocked showrooms based in Preston Brook (Warrington), Braunston (Daventry), Penkridge (Staffordshire) and Willington (Derbyshire).



Porta Potti  
CUBE



**THETFORD**  
Loving leisure



**THETFORD**  
Loving leisure





## **We need your Help!**

As a member you'll have followed our progress over the years and probably wondered when it will all happen. You will know that activity levels are increasing as we prepare to get the first (and subsequent) stretches into water. Now we have all the studies, the designs, the permissions and the key influential supporters and we are getting to the stage that we now need the money.

Obviously the big money will come from developers, grants, local authorities, commercial trading, share issues, etc. But in these cases we always need our own money to match with it. We are now asking our members and the public to help us to raise the money, which we can use to obtain more funding (normally £4 for every £1 donated). Of course it is more than just money, it's a sign that we are committed to making it happen and that makes a difference to other funders. So if you want to give us a boost please consider donating whatever you can afford to the cause.

There are many ways you can help including:

- ☐ Devote time to the committee activities
- ☐ Make a donation with gift tax relief
- ☐ Get a friend to join us as a member
- ☐ Join our monthly draw
- ☐ Remember us in your will and
- ☐ Support our activities

Any of these will be much appreciated in getting us closer to water in our canal.

## **Membership Gifts**

Last year we introduced the Christmas/Birthday gift membership option and as it went so well we're offering it again this year. For just £15 you can buy someone else a membership – just give us the contact details and we will send out the Packet three times a year and two free introductory books on the Derby Canal – gift wrapped if you'd like it. The package gets a membership to the end of 2016, so the earlier you buy it the better the value. At the end of

2016 the we send renewal advices to you or the member as instructed.

### **Monthly Draw**

If you subscribe £12 p.a. your name is entered into our monthly draw. The odds are much better than the national lottery, but the amounts are obviously much smaller. All profits from the draw go towards the maintenance and development work.

Winners since the last Packet have been notified and a full list is available on our website.

### **Where there's a Will**

Many people find that they are unable to make donations now, but could do so in their wills. October is the national "Free Will" month and we will be joining this scheme, so if you want to get your affairs in order the Trust is happy to cover the cost wills drawn up by our supporters. Obviously we hope that you'll consider us, but there is no obligation. To make this easier we have agreed a service with Killingworth and Parrott in Belper, a local solicitor specialising in wills, who will bill us for setting up a simple will or amending an existing one on your behalf. Please give it some thought.

We value all contributions and will make sure that all donations are appropriately recognised according to your wishes. There can be no better way to remember someone.

### **Support our events**

We are organising a fund raising **Barn Dance** at the newly named Canal Turn (the Moon) in Station Road, Spondon DE21 7NE on Friday 20<sup>th</sup> November from 7.30pm. Why not come to celebrate (and fund) the completion of the winding hole in Spondon?

Not only has the new landlord recognised us by changing the name, but he's also donated the room for the evening. We'll be dancing to a local band and caller called "Speed the Plough". The price is £7 and food and a bar will be available.



## Fundraising Initiatives

Through Recycle 4 Charity envelopes we are able to recycle inkjet cartridges and a payment will be made to the Trust. An envelope is enclosed with this edition of The Packet. Before sending off the envelope; please add your name and address on the back so that Recycle 4 Charity can send more envelopes direct to you for future use. If you don't have anything to recycle please pass on the envelope to a friend or relative that does.

Please note that the Royal Mail no longer allows mobile phones to be sent in these envelopes; so if you have one of these or laser printer toner cartridges that can be recycled please bring them along to a Society meeting and pass them to a Committee member. Additionally we are looking to establish a local network of collection boxes, with the first being in the Coach and Horses in Draycott. Do you have a business or know one that would be happy to host a collection box? If so please contact Chris ReesFitzPatrick or Eddy Case.

## Inland Waterways Association Raffle

The IWA are again repeating their raffle. Last year this was a great success for us with £320 received by the Trust and a Society member winning one of the prizes. A book of tickets is enclosed, if you can sell them on behalf of the IWA that would be wonderful, we would just ask that the purchaser nominates us by writing "Derby" or "DSCT" on the ticket counterfoil.

Counterfoils and monies raised should be either sent direct to the IWA by the end of December; or passed to a Society committee member or sent to Chris ReesFitzPatrick by the end of November. Additional books can also be requested from Chris ReesFitzPatrick.

## Derby Canal Company Dapol 00 gauge private owner wagon.

This may be the last Christmas that these will be available, so please don't miss out. Just £12 each, if you wish to order one (or more) please contact Chris Rees-FitzPatrick. Local delivery can be arranged otherwise £5 will cover packaging and postage for up to 3 wagons.





**SUPPORT US AND HELP RAISE  
MORE FUNDS TODAY**

**JUST BY SHOPPING ONLINE**

**Did you know...**  
Thousands of stores will donate to us a percentage of every pound you spend online when you shop through  
[www.giveasyoulive.com/join/derbycanal](http://www.giveasyoulive.com/join/derbycanal)

**On mobile & desktop**  
You can now shop via the Website; by installing the desktop Shopping Bar and on the go with the new Mobile App.



## Get your Packet by Email?

You currently receive a hard copy of the Packet either by post or by one of our distributor members delivering it by hand. The costs of printing, posting or distribution inevitably increase each year, so if you would be happy to receive your copy electronically instead and save us a few pennies please let us know by emailing the treasurer on [treasurer@derbycanal.org.uk](mailto:treasurer@derbycanal.org.uk). Of course you'll also obtain your copy in advance of the posted version and be doing your bit for the environment so everyone wins!



**WILSONS**

Providing NHS Services



Pharmacies  
(B J Wilson Ltd)  
Delivering Healthcare to the Local Community

**NUMARK+**

### **Prescription Medication & Management Service**

**Discuss your health or medicine problems with our pharmacists in confidence;**

Unsure of your medicines?

- Free Medicine Use Reviews—  
*Are your medicines right for you?*  
*Do you understand what they are for?*

New Medicines service

*Do you understand what they are for and how to take them?*

*Speak to our local pharmacy or our domiciliary care department*  
*01332 380732*



Free prescription service

Our pharmacies can check your next supply  
with you, order, collect and deliver

### **Other services include:**

- Stop Smoking –Advice & Support
- Emergency Hormonal Contraception
- Minor Ailments—Advice and Treatment
- Service to Care Homes

For late opening hours telephone your local branch or our office at 01332 348545

Wilsons pharmacy online at: [www.bjwilsonltd.co.uk](http://www.bjwilsonltd.co.uk)

Shop on-line at: [www.wilsonspharmacyonline.co.uk](http://www.wilsonspharmacyonline.co.uk)