



The Packet

Autumn 2014 Issue 76



COMMITTEE MEMBERS – Autumn 2014 Issue 76.

Chairman: Chris Madge, 62, Broadway, Duffield, Derbyshire, DE56 4BU. **Email:** chris@gowercroft.com **(home)** 01332 840502.

Vice Chairman: Paul Birtles, 54, Springfield Avenue, Sandiacre, Derbyshire NG10 5LZ. **(home)** 0115 9730207

**Membership
& Monthly Draw:** Vacant

**Treasurer &
Website:** Chris ReesFitzPatrick, 6 The Croft, Melbourne, Derby DE73 8GS **Email** christopher814@btinternet.com

**Volunteer
Co-ordinator:** Eddy Case 34, Lime Grove, Draycott Derbyshire DE72 3NS. **(home)** 07523 896645

Editor, The Packet & Website:

Doug Flack, 46, Fife Street, Alvaston, Derby DE24 8TN. **Email:** douglas.flack@btopenworld.com **(home)** 01332 576037.

Secretary: Anne Madge 01332 840502

NON COMMITTEE MEMBERS.

Publicity/Press Liaison: Philip Thompson, 113, Station Road, Draycott, Derby DE72 3QB. **(Office Hours)** 0115 9495213 **(home)** 01332 872381. **Email:** phil.thompson.net@boltblue.com

WEB-SITE ADDRESS: www.derbycanal.org.uk

DERBY AND SANDIACRE TRUST:

Please contact Chris Madge or Doug Flack at the above addresses.

Front Cover: The proposed Derby Arm & Visitor Centre on the Wyvern.
Centre Spread: Then, Now and the Future.

EDITOR'S CORNER.

Please do remember to send all material for the next issue to Doug Flack no later than the middle of January, 2015.

Advertising.

If you wish to advertise or, most importantly, know anyone that does, contact the Editor. Don't forget, there are 3 issues per year.

Acknowledgements.

Views expressed by individuals in The Packet are not necessarily those of the Society or Trust.

Photographs.

If you have or know anyone who has a picture of the canal, please let me know so that we can scan them for our archives.

Book – The Derby Canal by Mike Smith.

In 1978 Mike Smith wrote a book entitled "The Derby Canal" which detailed the history, decline and closure of our canal and which is an invaluable source of information.

He gave us permission to re-issue the book and I have spent some time updating it and having it printed.

It is available at our meetings @ £7.00.

They were produced with grants very kindly given to us by The Foyle Foundation and the Derbyshire Community Foundation.

Ian Horton on 01332 550478 has a number of Issues of Waterways World between 1988 and 2008, including an almost complete run from January 1994 to July 2002.

Any member is welcome to collect these free of charge from 15, Askerfield Avenue, Allestree DE22 2SU by prior arrangement.

Words from the Chair.

Welcome to the Autumn issue for 2014.

Restoration Developments.

Sandiacre.

Firstly the bad news. Despite all the efforts applied to our lottery bid we were unsuccessful. We were notified in June as promised and attended a debriefing in July. I'm not convinced that we fully understand the reasons given by the officers, but we are now looking at resubmission. We were told that they wanted a firmer basis (less uncertainty) on costs and considerably more evidence of the desire of the local population to support the project. HLF have suggested we apply for a smaller bid of £60k that could be dealt with in 8 weeks and fund the dig out/investigation of the locks at Sandiacre and involve the locals. This would then support a reapplication for major funding again with a better chance of success. We have also been advised to establish more formal partnerships with Councils, etc.

Chellaston.

We have seen some movement on the ground at Chellaston. Thanks to the members who have notified us of activity. The latest is installation of utilities across the canal line. We see this as evidence that the project will advance as soon as the Council have reached a formal agreement with developers. We have applied for some of the Community Levy funding from currently planned housing and are pushing the option for a marina along this stretch that could provide an income source for the Trust in the future. We also attended the Spirit of Chellaston event in July and were very well received and received offers of help from local politicians and a number of new members.

Spondon.

We have received good news at Spondon where the previously mooted housing development alongside a half mile stretch of canal is back on the agenda. We are working with the developer to help with water sourcing for the stretch while it is stand alone. The Moon pub in Spondon has now been sold to Fletcher's Yard next door and we have made contact to see if there might be increased scope for working together to complete the winding hole restoration.

Other Developments.

We have now received the water study commissioned by the Trust. As expected it points to the need for water sources at the top pound at Raynesway. We have therefore approached Celanese to pass to us part of their existing water abstraction rights. They have indicated they would be prepared to give us the 5% of their water that we need, but it appears that new legislation means if the original abstraction licence is amended in any way it changes from a permanent right to one that will need to be renewed every 12 years. So we are now talking to the Environment Agency to see if they can help. To date we have been encouraged by their helpful approach.

We have had an initial meeting with Network Rail to discuss a number of issues including the electrification of the main line railway to London. We wanted to see if this provides an opportunity to manage the line alongside the canal on Pride Park and Raynesway. We have no definitive answer yet, but we are now on their radar.

I attended the restoration meeting held by the IWA and the Canals & River Trust in Birmingham in May. I was joined by another Trust director and over a hundred other various canal restorers. We all took great heart from the gathering, which illustrated different methods of funding and redeveloping canals. They provided access to best practice developed during the Droitwich restoration, outlined a study from University of Northampton outlining the benefits of restoration and presented a 7 minute video to present the case. It seemed to me that CRT has recognised that restored canals are assets that will now allow them to generate income. It's a far cry from BW who saw a new canal as a new liability for maintenance. Since that time I have also figured with CRT in local radio coverage.

As a result of this meeting we held a Trust Development Group "brainstorming day". We invited key directors/Councillors to identify how we could sharpen up our approach. The outcomes were very helpful in identifying key and new sources of funding and the bodies that need to be brought on board to promote our progress. It is apparent that we need to recruit more people to this group. This means we can cover more ground and will also allow us to widen the group to bring in missing skills. If you've management/project/construction skills and want to help please contact me to discuss how it works. Even someone with no relevant experience is still valuable to us because they ask the obvious questions.

Working Parties.

As you'll see under Eddy's guidance we have continued to increase the size and effectiveness of our working parties.

We now have the village of Draycott identifying with the project and we hope to have working party assistance from locals and to attend their own local events, especially at Christmas.

Events.

As usual we had an excellent day at Breaston, airing our new display boards and creating a lot of interest. We were positioned alongside the "Friends of The Navigation Pub" and renewed old acquaintances. We will support them again later this month.

Unfortunately the weather at Crick was appalling, so the three days spent there were not as productive as we had hoped. Thanks go to the stalwarts in boots (particularly David Savidge) who worked hard to make the best of it. At least we got a sympathetic hearing from football fans after the Wembley defeat! If Crick was a disappointment the Lock through day made up for it (see below)

The next planned appearance is on Tuesday the 2nd of December (evening) at Draycott Christmas Fair.

Eddy, Eileen and Anne have been working on updating the merchandise as you'll see below. We are hopeful that this gives us merchandise that generates a profit, and promotes the cause. With Christmas coming, please consider some of our offers and particularly the gift of membership.

Meetings.

As always our speakers have been entertaining and covered talks on The Derwent Valley, the Trent and the Friargate line. The walk in Chellaston led by Derek and David was very well attended and provoked many questions from interested members.

Future meetings are held on the fourth Tuesdays at the Wilmot Arms, 49 Derby Road, Borrowash from 8pm. Members £2, other £3. The next meetings are:

- Oct 28th AGM including a light hearted pictorial update on Working Parties.
We will be looking for two new committee members to cover minute taking (Secretary) and Membership (see below).
- Nov 25th Stanley Matthews – My footplate career.
- Jan 27th Stuart Dare from Sustrans the cycle charity and who we work with at Draycott.
- Feb 24th The Uttoxeter Canal.

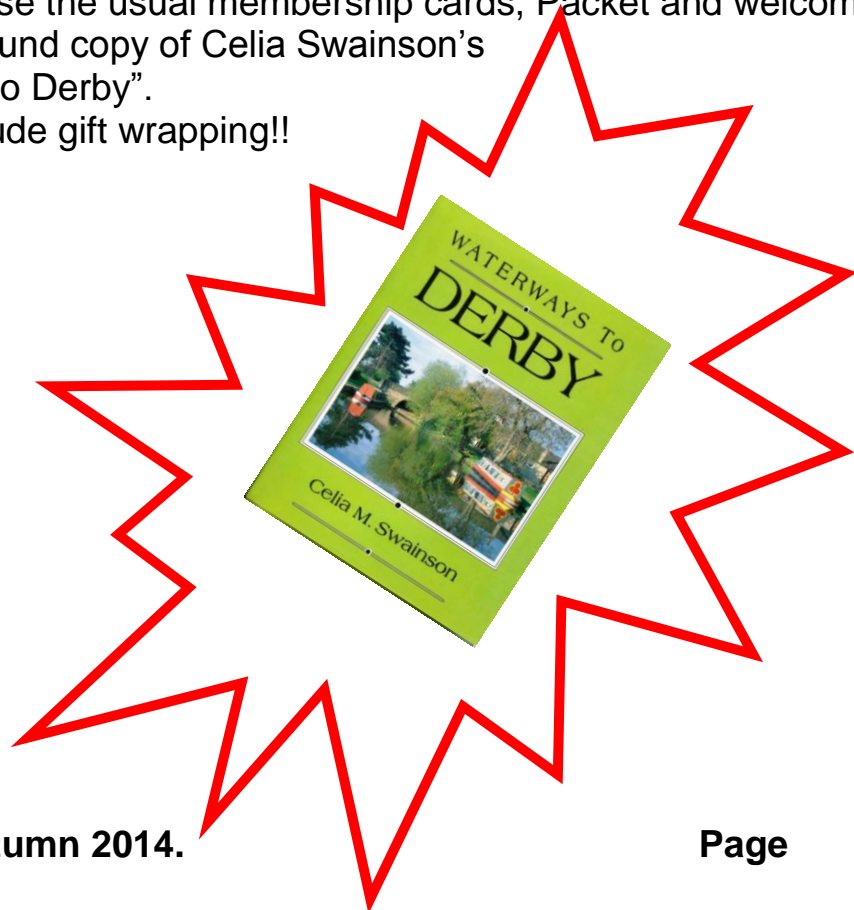
Membership.

Unfortunately our membership officer Chris Grimoldby has been under increasing pressure of work and has been working away so we will be looking to get someone on board who can take over this role. It involves keeping an up to date list of members, updating their contact details and sending out members' packs to new joiners.

There's also a lot more we could do to keep our members involved and informed. So if you want to help and can spare a few hours a month you would be welcomed with open arms. Obviously access to IT would be a distinct advantage.

In the meantime the committee are working on a package so that membership can be given as a gift. So if you can't think what to buy a friend for Christmas, why not consider a year's membership. The package will be gift wrapped and enclose the usual membership cards, Packet and welcome letter, but also a bound copy of Celia Swainson's book "Waterways to Derby".

We may even include gift wrapping!!



I've received more email contact from members over the last three months than ever before. It's good to hear from you, especially on matters concerning the canal's upkeep and don't forget that if you supply an email I'll be able to send you our monthly update.

Email me at chris@gowercroft.com with your details.

Hope to see you all at our forthcoming events. Chris Madge.

IWA Raffle Tickets.

You will find enclosed with this edition a book of IWA Raffle tickets. We are selling these on behalf of the IWA with view to obtaining a share of the profits from the raffle. If you wish to purchase the tickets or are able to sell them to friends or family please make your nomination for "DSCT" so that The Derby and Sandiacre Canal Trust benefits from a profit share. Payment for tickets can either be sent direct to the IWA as detailed on the reverse of the counterfoil or to Chris ReesFitzPatrick (by the end of November please) where cheques can be made to The Derby and Sandiacre Canal Society and a bulk payment will be made to the IWA. Please also contact Chris if you would like additional books of tickets. Christopher814@btinternet.com or 07757 979271 or 6, The Croft, Melbourne, Derby DE73 8GS. Full details of the raffle can be found on the IWA's web site at www.waterways.org.uk/raffle.

Gift Membership.

The answer to your prayers! If you don't know what to buy Dad or Mum for Christmas here's the answer ! Buy them a Special Introductory Membership Kit. For £15 you receive :

- *A full year's membership taking effect from Christmas or any date you specify.
- *Waterways to Derby by Celia Swainson – a book with lots of local history about our canal.
- *The latest Packet detailing where we are now.
- *A copy of the Special Derby Canal Heritage booklet full of anecdotes and historical information.
- *Free entry to the first two meetings.
- *Items from our shop can be added at an additional cost.
- *Gift Wrapped and delivered to the address specified.



Now is the time we need to encourage more local participation and you can help us. And it's open to anyone you nominate. In future years they can renew at current applicable rates.

So please send the enclosed form now!

If you wish to purchase gift membership please print the Gift Membership form that will be available on the website from early October. Alternatively write to Chris ReesFitzPatrick at 6, The Croft, Melbourne, Derby DE73 8GS detailing the full name and address of the recipient of the gift, the date of the gift, Christmas or birthday etc., and whether you want the gift pack to be sent directly to the recipient to arrive shortly before the gift date or for the gift pack to be sent to you the giver so that you can add a nice bow ribbon and present it direct to the recipient.

If you are adding additional merchandise you are asked to make the cheque payable to The Derby and Sandiacre Canal Society who will pass on the membership element to the Trust. If there are no additional merchandise items it would be helpful if the cheque is made payable to The Derby and Sandiacre Canal Trust. Please note that irrespective of the giver's Gift Aid status HMRC rules preclude the claiming of Gift Aid in this scenario.

The web site is gaining popularity and we are using it to publicise events and updates. We have also posted an animation of the Arm in its new format lifting boats from the aqueduct level down to the Derwent and visitor centre. It's worth a look.

Monthly Draw Results.

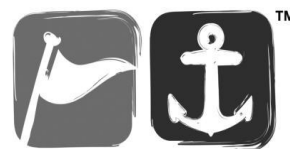
May	1086 P Heathcote
	151 S Johnson
	1564 E Holland
June	1106 D Ford
	138 E Newton
	230 R Champion
July	1364 A Dorling
	996 R Walton
	599 D Nix
August	1660 J Birtles
	1159 F Hales
	1074 M Gladwell
September	1706 B Cross
	1514 I Slater
	734 S Coupe

New 4,000 Sq Ft Superstore!



Mercia Marina
Findern Lane
Willington,
Derbyshire
DE65 6DW.
T 01283 701445

Open 7 Days a week
Monday - Saturday 9.00am - 5.30pm
Sundays - 10.00am - 4.00pm



Midland Changers

CANALBOAT EQUIPMENT SINCE 1979

5% Discount

* only available on production of a valid Derby & Sandiacre Canal Society membership card (no further discounts apply)

Available for all
Members

* Terms & conditions apply



DERBY & SANDIACRE CANAL SOCIETY

'Save up to
15% with
our loyalty
discounts'
Ask for details.

Main Distributors for:-



Eberspächer



STOVES

THETFORD

International.
yachtpaint.com

SHURflo

JABSCO



Shoreline
refrigeration • electrical • marine

WAEKO

International

Contact Details

Parkgate Lock, Teddesley Road, **Penkridge**, Staffs, ST19 5RH.

London Road, **Braunston**, Northants, NN11 7HB.

The Wharf, **Preston Brook**, Warrington, Cheshire, WA4 4BA.

Mercia Marina, Findern Lane, **Willington**, Derbyshire, DE65 6DW.

T 01785 712437

T 01788 891401

T 01928 751800

T 01283 701445

ottom of Form

THINKING OF BUYING A CARPET????

THE LAST TIME YOU HAD A CARPET FITTED

Did the Fitters cut your
doors FREE OF
CHARGE
WE DO!

Did the fitters MOVE your
FURNITURE WITHOUT
CHARGE
if you could not manage
WE DO!

Did they TAKE YOUR
OLD CARPET UP if you
couldn't manage
WE DO!

WERE THEY ON TIME,
POLITE and BAG up all the
WASTE afterwards
WE DO!

Did they do a
GOOD JOB
WE DO!

Was the fitting STILL FREE
even on the cheapest
carpets and Vinyl
OURS IS!

Did the shop offer to
BIND any WASTE into
MATS & RUGS for you
WE DO !

If you weren't
SATISFIED in any way,
did the shop put any
problems right to your
satisfaction
WE DO!

Furniture at below
City
Centre Prices

**FREE
DELIVERY**
on all items

THESE ARE JUST A FEW REASONS WHY OUR FAMILY FIRM HAS BEEN
ESTABLISHED OVER 40 YEARS ON RECOMMENDATION ONLY.
**PLUS THE BEST ALL-IN PRICE WITHOUT INFERIOR UNDERLAY &
ACCESSORIES.**

FREE HOME ESTIMATE & SELECTION

Chaddesden Furniture & Carpets

637 NOTTINGHAM ROAD, CHADDESSEN, DERBY TEL: 01332 674638

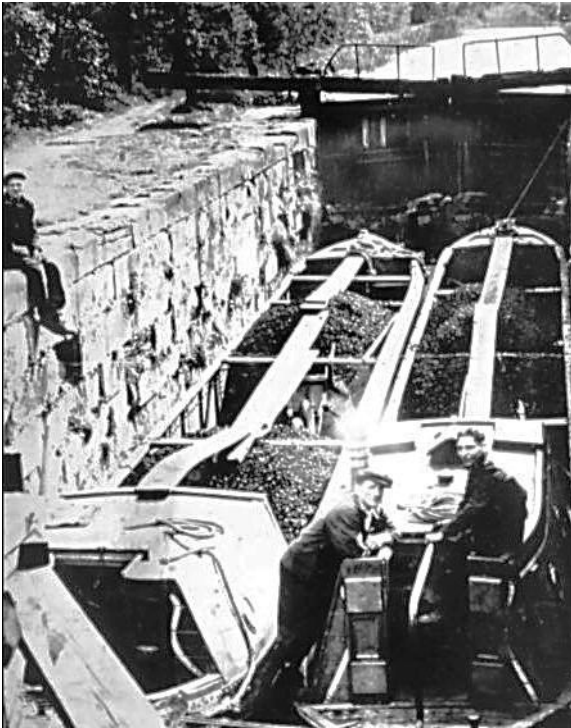
**Risley lane bridge,
Breaston c1950s**



1960s

The Future





Sandiacre Bottom Lock. 1946.

1960s.



The Future.

The Packet 76 Autumn 2014.

Working Parties.

We've been **so** busy since the last Packet with a number of varied projects along the East/West line of the canal. And we've seen our attendances grow attracting new volunteers from Spondon, Borrowash and Draycott – but there's always room for more.

At Spondon we've spent a couple of weekends with mechanical help leveling and then clearing the winding hole. We've uncovered the extent of the winding hole and the wharf that used to feed Spondon. Unfortunately we also uncovered the site of dumped bottles for several decades so have had to spend time cleaning the site of broken glass as well as the abundant Himalayan Balsam. It is starting to take shape, but needs another good



couple of weekends when we can get the volunteers and while the site is reasonably dry. Of course the site would look a little prettier if the boundary fence with the Moon pub hadn't been vandalised. Now that Fletcher's have bought the pub perhaps it will be more secure and we can work with them to complete the work.

Bramble Clearance.

At Borrowash we've been working with locals residents – guided by our own Nigel Dagley – to keep the crack willow at bay. We've cut some hedge rows and cleared out the bottom lock. We now have our hedge trimmer back in commission – thanks Ian – so can complete the hedge trimming on the Spondon side of Station Road. The hedge laying along that stretch has been very effective as you can see by the following years' growth. It's great to work in tandem with local residents and prove the restoration is really a community project.

At Draycott we pulled off the site as April approached to allow wildlife free rein. We made such good progress with the hedgelaying there that it was

difficult not to keep going. However we are back on site again now as the Autumn approaches with the aim to complete the last 300 yards. We've also managed to clear the area beside the hedge (on the far side of the canal) so that Paul with his tractor can keep it mowed. It's really starting to take shape and once the project is complete we can turn our attention elsewhere. Draycott has also seen some activity during the summer as we have seen an invasion of not just Himalayan Balsam, but also Japanese Knotweed. A couple of weekends were required to cut it back and burn it. We had to get it before the seeds set. Plans are now afoot to train and qualify a Knotweed sprayer so we can control it better next year and we may even offer our services to local Councils, as there's plenty of it around. Of course I've volunteered for this arduous task – I'm looking forward to getting into uniform!

Draycott always attracts a good deal of interest as it's a very popular path locally. We've also been talking to the residents and are looking forward to our team being bolstered by local talent when we are at Draycott. Come and join the party!!



Clearing the sump entrance at Derby Road bridge, Draycott.

We are also in talks to work at Sandiacre. After a short recce there in the Spring we are hoping to be on site to locate and unearth the Sandiacre lock chambers. If we can see how they look and plot them accurately it will make restoration easier to plan. It should be a really interesting exercise and we need to get lots of local help and interest to justify the lottery funding.

As always details of working parties are on the website – look for the Diary section. If you let me know that you're interested I can text you with details and helpful advice such as "bring your wellies" – unlike the Chairman I can overtype the spell checker. Hope to see you soon – every extra hour helps the cause.

Chris Madge

Fundraising.

We now have a number of new fund raising initiatives that are available to raise further funds to help drive forward our ambition of restoring the Derby and Sandiacre Canal.



Through Recycle 4 Charity we are able to recycle inkjet cartridges, mobile phones and laser or toner cartridges, and a payment will be made to the

Trust. Any of these can be brought along to a Society meeting and handed to a Committee member. Alternatively inkjet cartridges and old mobile phones can be sent for recycling in the envelope that is enclosed with this addition of The Packet. Before sending off the envelope; please add your name and address on the back so that Recycle 4 Charity can send more envelopes direct to you for future use. If you don't have anything to recycle please pass on the envelope to a friend or relative that does.

If you have laser or toner cartridges and can't bring them to a society meeting or you would like a collection box for a larger quantity of cartridges or for a business please contact our treasurer Chris ReesFitzPatrick.



Do you do any of your shopping online? If you do then a donation to the Trust will be made by the online retailer without your shopping costing you a penny more.

Give as you Live brings together thousands of leading stores, including John Lewis, Expedia and Tesco, who have all signed up to donate a percentage of every purchase you make online. Start by signing up at:

<http://www.giveasyoulive.com/join/derbysandiacrecanal> or follow the link and install Give as you Live.

Derby Canal Company Dapol 00 Gauge Private Owner Wagon.

Having seen reviews of Dapol private owner wagons, in the Railway Modeller magazine, that are sold to raise funds for various charities a decision has been taken to commission a limited edition of approximately 100 wagons. The wagon will have a green background with "Derby Canal Company Established 1796" emblazoned in white text.

It is relatively expensive to commission and this means that it will have a sale price of £12; which is in line with those advertised in the Railway Modeller magazine. If you wish to order one (or more) please contact Chris ReesFitzPatrick. Postage and packing costs will be determined



once the stock is received and measured and weighed; for those of you that are local to the canal's route delivery can be arranged.

There are plenty of other items for sale such as Polo Shirts, Sweat Shirts, calendars, books etc. available.

New Merchandise Now on Sale!

Along with our wonderful Festive offering of Membership to friends and family for only £15.00, we are also pleased to announce the launch of our very own ecommerce page with lots of new ideas for gifts that are suitable for all ages.

New items range from high quality cotton T-Shirts for adults (with a wicked your Canal Needs You logo) at only £7.50, there is also a children's T-Shirt with a wonderful design on the front at only £5.00 (these come in three different sizes).

We also have two versions of The Derby Arm Mug in a lovely blue and another new mug featuring the canal route, on a white background, these are competitively priced at only £4.50 each.

Along with the cooler days and nights we have a selection of adult sweat shirts priced at £12.50, plus a wide choice of books and other goods, all available on the www.derbycanal.org.uk site.

Local delivery within the Derby and surrounding area can be arranged free, otherwise postage will be advised dependant on order numbers.

To obtain any further information on any of the above, please email Eddy on eddycase69@hotmail.co.uk



Working Parties.

The Society resumed working parties after the annual summer break that we normally have in August.

We were in attendance at Borrowash Bottom Lock to tackle the growth in the canal bed and on the walls of the canal lock that was threatening to undermine the good work already done on this site on previous visits.

The main problem was actually gaining access to the bottom of the lock where the work needed doing, but after a lot of scrub clearing we managed to enter the lock to find that the ground was actually dry enough to enable us to start work from one end to the other.



Pictures show the problem faced and the end result.



This has been a wonderful start to our Autumn and winter campaign, the work done shows the canal lock as it should be. Work continues throughout the coming months, we meet every other Sunday, full details are available on our web site; derbycanal.org.uk – along with social

meetings and a new and upcoming ecommerce page that will be introducing a new Christmas Membership package!

Travels on the Mon and Brec. by Chris Madge.

After three years trying to get to the Soar this year we thought we'd try the Mon and Brec. We hired a boat from Goytre and set off in early September, south towards Cwmbran. We cruised for the best part of two days and saw no boats – I'm sure that's a record.

We thought we'd get to the Newport end before the NATO Summit later that week. Whilst it was a bit shallow the scenery was remarkable and the natives very welcoming. I'd set ourselves for Welsh delicacies in the pubs but on the first (Monday) night we reached a recommended pub in Mamhilad only to find they didn't cook that night. No matter they said – here's a Chinese menu.

Just order what you want and they'll deliver it here. The land lady brought out plates and cutlery and we sat down to eat in the pub. Not a Welsh cake in sight.

We took our bikes with us – safely stowed in the front as the bridges are very low – and continued on at the end of navigable waters at Cwmbran to the outskirts of Newport and back up the Crumlin Arm. That's the beauty of canals it's easy cycling as it's so flat! There are 29 disused locks along that stretch and the "Fourteen Locks" section is like an extended mountain climb. So we recovered in the local Canal Trust's cafe at the top. That's when I landed in trouble – for comparing notes with the local Chairman and CRT Trustee on duty that day. Despite the telling off I have some good info on how to make money out of toilets and the new (and cheaper) design of lock gates that are being installed along the stretch we had just cycled (he



wouldn't tell me how he'd got the money from HLF though). At this point when he was saying how he'd have to give it up due to failing health, Anne lured me away with the promise of an ice cream and some flat cycling.

We enjoyed the beautiful villages

as we travelled north through Abergavenny to Brecon, climbed a couple of hills and took a cycle ride around Talybont Reservoir. It's only three miles I said as we left – we'll be back in an hour. It wasn't. It was also almost all uphill, but the views and the free wheel back were wonderful. We stopped at Llangynidr just to find out how to pronounce it, but I've forgotten already.

There's just one question that those in the know can help with. In one canal-side pub we tried out the local real ales. Anne decided on one called CWRW just so I'd have to ask for it. The barman said it meant "Beer". Well it tasted fine, but

So for those who haven't tried it we'd recommend it as the best yet.

Fun & Fund Raising.

One of our fundraising ideas is a lock through. This involves some volunteers coming to the lock at Swarkestone to help boaters to go through it. We work the lock for them and encourage them to pay us a donation for doing it.

This year, we timed it to coincide with the first Sunday of the school holidays; it was a dry and sunny day and plenty of families were taking boats out. We also set up a stall and sold some of our merchandise and cold drinks at a very fair price.

At the same time, Swarkestone Nursery were hosting a food fair, so we also had a stall there, and could signpost people from one event to the other. I had the opportunity to spend time at both events, it was a successful day and there was a lot of interest from the people we came into contact with about the Derby canal and the restoration project.

We had the display boards up at both venues and, at the garden centre, "Spot the kingfisher" was a great success.

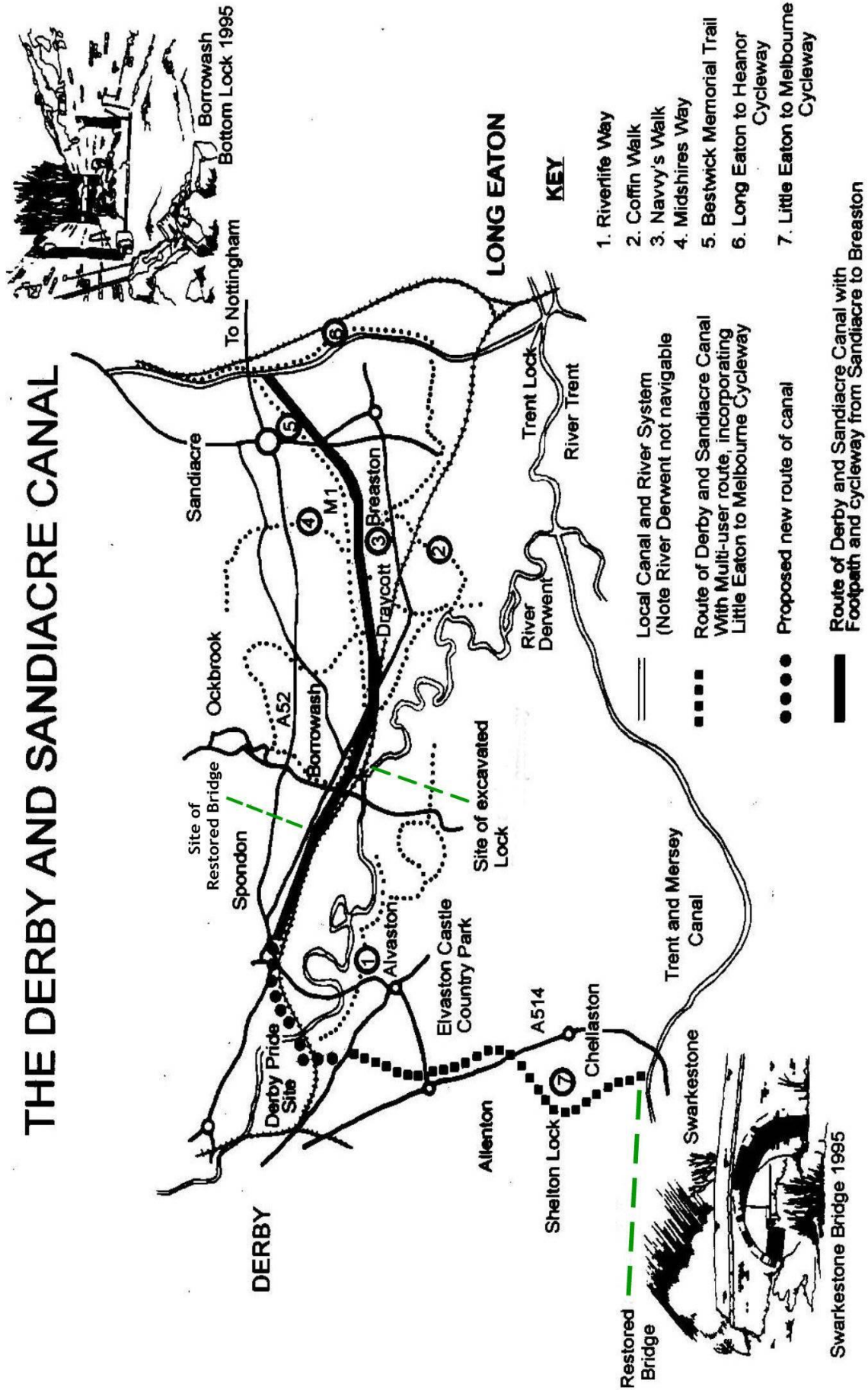
The picture shows the winner



Chris collected copies of John Wain's book about how the canal came to be closed and the fight to keep it open in the early sixties. We have some copies and it is well worth reading. We sold several of the heritage booklets, copies of which were also distributed with the last Packet.

I think that all the volunteers enjoyed the day and we made a good profit. The boaters that we helped or held to ransom, depending on your point of view, were supportive of the lock-through, many knew about the Derby canal and they donated generously. It is always good to be involved with these events and I would recommend trying one - it is an opportunity to spend time with like minded people and have the chance to help the Society in this way.

THE DERBY AND SANDIACRE CANAL





Providing NHS Services



Pharmacies
(B J Wilson Ltd)
Delivering Healthcare to the Local Community



Prescription Medication & Management Service

Unsure of your medicines?
Our pharmacies can check your next supply, order and collect
your prescription.

Discuss your health or medicine problems with our pharmacists in confidence;

- Free Medicine Use Reviews—
Are your medicines right for you?
Do you understand what they are for?



Free prescription
collection and delivery available

Other services include:

- Stop Smoking –Advice & Support
- Pregnancy Testing
- Emergency Hormonal Contraception
- Minor Ailments—Advice and Treatment
- Service to Care Homes
- ‘Flu vaccinations at selected branches

For late opening hours telephone your local branch or our office at 01332 348545

Wilsons pharmacy online at: www.bjwilsonltd.co.uk

Shop on-line at: www.wilsonspharmacyonline.co.uk