

# *The Packet*

*Spring 2014*



Issue 75

DERBY AND SANDIACRE CANAL TRUST AND SOCIETY

## **COMMITTEE MEMBERS – Spring 2014 Issue 75.**

**Chairman:** Chris Madge, 62, Broadway, Duffield, Derbyshire, DE56 4BU. **Email:** [chris@gowercroft.com](mailto:chris@gowercroft.com) **(home)** 01332 840502.

**Vice Chairman:** Paul Birtles, 54, Springfield Avenue, Sandiacre, Derbyshire NG10 5LZ. **(home)** 0115 9730207

**Membership & Monthly Draw Treasurer &** Chris Grimoldby. 42 Holmes Road, Breaston, Derby DE72 3BT or **Email** [chris@grimoldby.com](mailto:chris@grimoldby.com)  
Chris ReesFitzPatrick, 6 The Croft, Melbourne, Derby DE73 8GS 07757 979271  
**Email** [christopher814@btinternet.com](mailto:christopher814@btinternet.com)

**Working Parties:** Scott Birkhead. 07504 464545

### **Editor, The Packet & Website:**

Doug Flack, 46, Fife Street, Alvaston, Derby DE24 8TN. **Email:** [smallpipes@btinternet.com](mailto:smallpipes@btinternet.com)  
**(home)** 01332 576037.

**Secretary:** Anne Madge address as Chairman above. **Email:** [a.madge@yahoo.co.uk](mailto:a.madge@yahoo.co.uk)

### **NON COMMITTEE MEMBERS.**

**Publicity/Press Liaison:** Philip Thompson, 113, Station Road, Draycott, Derby DE72 3QB. **(Office Hours)** 0115 9495213 **(home)** 01332 872381.  
**Email:** [phil.thompson.net@boltblue.com](mailto:phil.thompson.net@boltblue.com)

**WEB-SITE ADDRESS:** [www.derbycanal.org.uk](http://www.derbycanal.org.uk)

**DERBY AND SANDIACRE TRUST:** Please contact Chris Madge or Doug Flack at the above addresses.

Front Cover: Spoon Dredger at the Silk Mill

Ian Horton on 01332 550478 has a number of Issues of The Packet between 1988 and 2008, including an almost complete run from January 1994 to July 2002.

Any member is welcome to collect these free of charge from 15, Askerfield Avenue, Allestree DE22 2SU by prior arrangement.

## **Words from the Chair.**

Welcome to the Spring issue for 2014.

I am sorry to report the death of Jeff Howe, who passed away on the 13<sup>th</sup> of February. The high attendance at his funeral on the 6<sup>th</sup> of March was testament to his popularity and the Society/Trust was able to express our gratitude for the efforts he had made over the last twenty years and particularly the last two to promote the overall project and the Sandiacre section in particular. We will miss him and send our condolences to his family.

## **Restoration Developments.**

The HLF bid was submitted on time in February. David Hayes worked hard to get all our information onto the HLF website, which seemed to crash just at the wrong time. David has assured me it was HLF are not holding us responsible! The total project will cost approaching £2m with around a 75% contribution requested from HLF. We are now working on getting the balance of funding together, although we will have a few years to collect it all. We await June with fingers crossed.

In preparation for the early stages of the work – assuming we are successful – we have been casting our net wide to obtain some of the background to the area and the use of the canal over its lifetime and particularly collecting the personal recollections and memories of those who used the canal and the Boat Inn Accompanying this edition is a special edition that features these tales. Barry Starnes has recently brought his Mother, June, to visit us; June's husband was born in the Boat Inn and has some tales to tell.

The development at Chellaston continues. A small housing area to the east of the canal has been passed by planning, but a much larger one to the west is likely to be a while off as it is complicated by involving both South Derbyshire and Derby City councils, so much more debate will be required before that progresses. Anyone who has visited the T12 site will see that some works on the footpath have started ahead of the bridge being built. Time is running out, but we still await an agreement despite many promises that it is imminent received in the past.

There has been little movement on the Pride Park and Arm development, but we have recently seen that money has been set aside for the electrification of the main line railway to London. This should provide opportunities as they straighten out the line on Pride Park and Raynesway and may give

more attention to drainage of the Draycott section with further interest possible in the canal restoration there. We are still looking at the implications as the Packet goes to press.

The water study commissioned by the Trust is about to be delivered. This will provide a better understanding of the likely water flows of any water abstracted from the River Derwent to feed into the canal at Spondon. We expect to have a formal agreement with Celanese to pass to us part of their existing water abstraction rights. We will then need to argue our case with the Environment Agency to make sure we have sufficient water to run the whole canal without back-pumping.

We have been invited to another meeting with the Canals & River Trust in Birmingham in May. Following their approach to embrace restorations the meeting will bring together people from all the schemes to provide guidance and best practice help from other schemes such as the successful Droitwich project.

### **Working Parties.**

We have seen a superb effort with working parties over the winter with increasing numbers and a significant impact in hedge laying and improvements accomplished. Thanks to Eddy for the tremendous publicity and awareness he has generated.

### **Events.**

We have already been out and about this year. Thankfully whilst we've had plenty of rain the winter has been mild. On 26<sup>th</sup> January we found ourselves tagging along at the CRT's open lock event at Sandiacre. Apparently almost 700 people attended and we talked to most of them about the Derby. Even the rain relented briefly and it was a very worthwhile and well supported day. Thanks to all that helped.

We are fast approaching the new events season and we plan to attend

Mon 5 <sup>th</sup> May	Breaston Gala.
Sat 24- Mon 26 <sup>th</sup> May	Crick National Boat Show – We will be sharing the IWA grouping at a subsidised rate.
Sat 21 <sup>st</sup> June	Spirit of Chellaston.

We won't be attending the County Show this year and will be devoting time to the Crick show as an alternative. We would welcome any one who is

attending the show to offer a few hours to help man the stand. Three days will be quite a challenge for the normal stalwarts! We're also looking at a Spondon event and a lock through at Trent Lock in July if we are allowed.

Watch the web site for news.

We are in the process of redesigning and reprinting the display boards to improve the look of the stand for events such as these. So it will be worth coming and having a look. Unfortunately you'll probably have the same voices to listen to, though!

### **Web Site.**

The web site is gaining popularity and we are using it to publicise events and updates. We have also posted an animation of the Arm in its new format lifting boats from the aqueduct level down to the Derwent and visitor centre. It's worth a look.

### **Meetings.**

We have already had excellent entertainment from speakers on the Ash-over Light Railway, Canal Mania, the Canal & River Trust approach to heritage preservation. We were told by Nigel Crowe from CRT that we had asked the most interesting questions. Perhaps he says that to all his audiences!

As always everyone is welcome on the fourth Tuesdays at the Wilmot Arms, 49 Derby Road, Borrowash from 8pm. Next meetings are:

April 22 <sup>nd</sup>	John Ward on the History of the Derwent Valley.
May 27 <sup>th</sup>	Richard Stone on The River Trent.
June 24 <sup>th</sup>	Canal Walk in the Chellaston Area.
July 22 <sup>nd</sup>	Keith Blood on "The Friargate Line".
Sept 23 <sup>rd</sup>	Trevor Wragge an expert on Drystone Walls.
Oct 28 <sup>th</sup>	AGM.

### **Northern Canals Association.**

As I write this we are a week away from the NCA meeting. Plans are pretty much in place and we intend to show them the Chellaston section with the potential for early development together with the bridge restoration by Swarkestone lock. I'm sure we'll impress them all.

As always we love to see new faces come along to events and there's plenty to choose from if you have a spare hour or so and the inclination.



## BESPOKE JOINERY *from concept to completion*

Conservatories and Garden Rooms

Windows and Doors that tilt,  
turn slide or fold

Wardrobes and Internal Fittings

Stairs

*Fully finished in our workshop and  
installed by our experienced joiners.*



  
**Gowercroft**  
**JOINERY**

Call us now on **01773 300510**  
to discuss your needs or visit

**[www.gowercroft.com](http://www.gowercroft.com)**

## **Cut cuttings No 1.**

Whilst researching for a book on transport in Spondon<sup>1</sup>, I searched the online newspaper database for articles relevant to the canal. It's fair to say that once the euphoria of opening was over, a depressing number of the articles concerned drownings in the canal!

If the Editor permits, this will be the first of a series of articles based on these newspaper reports; so that we don't depress you too much initially, I propose to start with a somewhat cheerier story. The Derby Daily Telegraph of Friday August 21<sup>st</sup> 1931 reported a "thrilling rescue by Spondon hero". John Pearce, then 14, employed in the bobbin stores at British Celanese dived into the canal fully dressed to pull out 4-year-old Blanche Cousins from the water.

The remarkable feature of this rescue is that it is a virtual repeat of a rescue 12 months previously, involving the same two people. Presumably young Blanche learnt little from the lesson, although she "became ill" from the earlier immersion. The Pearce's seem to have a family tradition of such rescues, as John's father, William, has a life-saving certificate after a canal rescue in 1919.

The article illustrates was a huge local employer British Celanese was at this time. In 1927 there were 8.000 employees and at shift change the bus park would hold 130 vehicles, double that number on a Saturday. Both the Pearce's (father and son) worked there, as did Blanche's father, a stoker at the factory.

Blanche, together with her parents and six siblings are reported to live in "The Huts". These were intended as temporary accommodation for those who constructed the Celanese factory during the First World War. But, as so often with temporary accommodation, they were clearly still in use over a decade later.

A photo reproduced in the "Exploring Spondon" book<sup>1</sup> gives an aerial view which shows the canal and the Huts in the late 1920s (top right corner). Across Megaloughton Lane from the Huts is the Leach Neal colour works,

---

<sup>1</sup> "Canoes to Commuters: transport in Spondon through the ages" by Derek Hathaway, published by Spondon Archive 2013, ISBN 978-0-9570676-4-6. Whilst not "available in all good booksellers", it can be bought in a number of shops around Spondon – and from the author! "Exploring Spondon" by Ruth Hooper and Anita Hayes is similarly available.

squeezed between the canal and the railway. Some of the buildings still exist today as part of Albert Looms' scrap yard.

None the worse for her experience, Blanche apparently went on to marry Fred Tilling in 1947 and have 2 children of her own. They were presumably warned "not to play near the canal"!

## Boy Twice Saves Girl From Canal

### THRILLING RESCUE BY SPONDON HERO

Blanche Cousins, aged 4, daughter of Mr. Herbert Cousins, a stoker at the British Celanese Works, Spondon, has twice been rescued from drowning in the canal at Spondon by the same boy.

**T**HE hero is John Pearce, aged 14, of Spondon, who is employed in the bobbin stores at the British Celanese works.

Blanche was playing with other children on the canal bank last night when she tripped over a brick and fell into the water. Pearce heard the cries of her companions for help and dashed out of his home which is near the canal, and dived in fully dressed. Grabbing hold of her he swam with her to the bank.

#### PREVIOUS RESCUE.

*His previous rescue of the girl took place twelve months ago, when she became ill as the result of the immersion. She was none the worse to-day for her latest escape from drowning.*

Pearce went to work to-day as usual. He was a poor swimmer last year when he made his first rescue, but has since become a good one. He holds the school certificate for swimming efficiency.

Mr. and Mrs. Cousins, who live at The Huts, Spondon, have a family of seven children.

#### FATHER ALSO A RESCUER.

Mr. William Pearce, father of young Pearce, is a member of Celanese fire brigade. He holds a certificate for life-saving, having rescued a boy from the canal 12 years ago.

Mrs. Pearce told a "Derby Telegraph" representative to-day that her son was reading a book when he heard shouts that Blanche was in the canal. He ran to the scene and quickly got her out.



The Canal Alongside Leach, Neil & Co. (now Loom's Scrapyard).



# GARDEN MAINTENANCE

## Domestic & commercial

- 🌿 General maintenance
- 🌿 Planting
- 🌿 Turfing
- 🌿 Lawn care
- 🌿 Seeding
- 🌿 Drive & patio cleaning
- 🌿 Tree pruning
- 🌿 Borders

## Weekly & fortnightly contracts

- ✓ GNVQ level 1&2  
Horticulture & Landscaping
- ✓ Fully insured



A friendly service at competitive rates

Call **07513 989 686**

## **Working Parties.**

January the 12th saw the first working party of the year, it brought us a sharp frosty start, 10 volunteers turned out to brave the weather, but as the morning progressed the sun came out and shone on us.

The aims where to continue the good work on hedge laying started in 2013, from both sides. With the two teams approaching each other, we hoped that we could complete this work before the birds started nesting in the Spring, with an added need to repair the bridge over one of the water culverts that assist with drainage from the adjacent fields.

Three separate teams set out, two teams cutting and clearing as they went, the third team busy with repairing the bridge that was restricting the grass cutter from keeping the growth down on the opposite side to the footpath.

January 31st was our now famous appearance on Radio Derby with the lovely Sally Pepper.

The second working party of the year was on the 2nd of February, we continued work along the canal bank clearing the way for the hedge layers the following week, a general tidying up and stacking two more fires ready to go when the weather cleared up, There was quite a lot of water in the ditch after all the recent rain.

8 volunteers that week, very good considering the run of wet days!

Some additional hard-core has now been placed next to the bridge made for the tractor to go over the cleared ground to keep the growth down to a manageable level from now on, also some emergency repair work was done to one of the waste culverts that had decided to change its course and was beginning to erode the side of the bank.

March found us all at Draycott, the weather held for us and a lot of ground was covered by the two hedge laying teams and the workers helping to utilise the cut-offs for stakes to support the new hedge and clearing up. At the start of the winter we faced over 750 metres of hedges to lay, we now only have 200 metres left to cover; however work has now be scaled back at Draycott to allow the wildlife to settle in for the Summer.

A lot of work that week also involved restoring a missing fence panel that was allowing access to the footpath along the Draycott stretch for motor-

cycles, this was causing a nuisance for residents and leisure users, this has been replaced by the Canal Society's notice board.

The 6<sup>th</sup> of April found us at Borrowash bottom lock, helping the team that has been working all over the winter with hedge laying, The weeks working party at Draycott was cancelled out of respect to the wildlife that has been spotted in the new hedges. two teams working, one on the stretch between the Bottom Lock and Station Road, clearing debris from the winter hedge laying and continuing with more hedge laying. The second team deployed to cut over 150 metres of hedge laid last year, only another 120 metres or so to go.

We seem to be benefitting from coverage in the local press that is raising the profile of the working parties and the Canal Society in general. More help is always welcome, we now attract helpers from all age groups, and they always return!

Eddy.

PS A cracking Sunday morning of the 13<sup>th</sup> of April saw the team at Sandiacre, a cold start, but the sun soon came out and warmed us up as we started work clearing the grass sides to both sides of the canal path, clearing the litter that had been dropped over the winter also cutting back any over-hanging growth that would hinder the many walkers/cyclists and horse riders that use this wonderful green pathway running from the Erewash Canal up to the road near the Bridge Inn.

A large tree that appeared to have partially fallen over and was in danger of blocking the main path half way up from the bottom Lock has now been cleared, over hanging branches have been cleared along the entire bottom stretch and the path now looks a lot clearer and tidier.

A lot of the material that has been thrown over various residential fences could not be cleared due to the unknown contents, this will be reported to the local authority to follow up on.

To see photographs of the previous work parties and details of future work parties, please see the website [www.derbycanal.org](http://www.derbycanal.org)

## **Books for Sale.**

### **"Vintage Marine Engines for Narrow Boats".**

Laminated h/duty card covers, A4 size, 152 pages, over 100 colour photos, 35 black and white photos plus over 70 Line drawings/illustrations. Priced at £22.95. A Book that deals with the selection of a vintage marine engine for a narrowboat. In thirteen chapters it describes the engines made by the thirteen most popular Companies. It also covers, chapter by chapter the design of the engine room, the cooling, fuel and control systems, Props and shafting. It includes tips on rebuilding and installing a Vintage Engine.

### **A to Z of Vintage Marine Engines; Book ONE.**

123 A4 sized pages, Laminated card covers, The companies covered are : Ailsa Craig, Allan, Armstrong Siddeley, Beardmore, Bergius (Kelvin), Bolinders, British Junkers, Brit, Brooke, Brotherhood, Campbell, Coventry Climax, Coventry Victor Crossley, Dan, Dorman, Enfield, Fowler, Gardner, Gleniffer, Grampian, Griffin, Hundested, and Kromhout. With over 90 colour photos, 95 black & white photos plus 160 line drawings/illustrations. Priced at £21.95 Plus £4.95 UK p&p.

### **A to Z of Vintage Marine Engines; Book TWO.**

Laminated Card covers, 118 A4 sized pages, The companies covered are : Lister, Munktel, McLaren, Meadows, National, Oil Engines Coventry, Parsons, Perkins, Petters, Plenty, Russell Newbery, Ruston & Hornsby, Sabb, Seffle, Stuart Turner, Thornycroft, Turner, Vickers-Petters, Watermota, and Widdop. With 60 colour photos, 50 black & white photos, plus over 160 illustrations/drawings. Price £21.95 Plus £4.95 UK p&p.

### **The Book of the Kelvin Model J.**

Laminated card covers, 144 A4 pages with 62 colour, and 74 line illustrations. In 10 chapters it details the history, the handbooks and exploded parts book. Do it Yourself strip and rebuilding in full detail, Plus Data sheets and the details of the oldest surviving engine. Price £23.95 + £4.95 UK p&p., Comprehensive coverage of the most popular Kelvin today.

K Whittle,  
9, Maes Y Ddawns, Llangadfan, Welshpool, SY21 0GA  
kwhittle@btconnect.com      01938 820815

EnergyCertificates-FirstCall is pleased to be associated with the Derby and Sandiacre Canal Society and wishes them well with their historic canal restoration.



Are you selling your house or do you have a property to rent?

Then you are legally obliged to have an

## **ENERGY PERFORMANCE CERTIFICATE (EPC)**

Locally based, NHER accredited, fully insured supplier.

**Prices start from £40  
with NO VAT.**

**Tel: Chris 0785 368 4886**

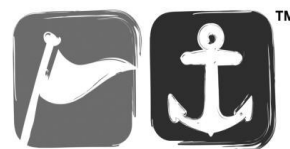
**[www.energycertificates-firstcall.co.uk](http://www.energycertificates-firstcall.co.uk)**

## New 4,000 Sq Ft Superstore!



Mercia Marina  
Findern Lane  
**Willington,**  
Derbyshire  
DE65 6DW.  
T 01283 701445

Open 7 Days a week  
Monday - Saturday 9.00am - 5.30pm  
Sundays - 10.00am - 4.00pm



## Midland Changers

CANALBOAT EQUIPMENT SINCE 1979

## 5% Discount

\* only available on production of a valid Derby & Sandiacre Canal Society membership card (no further discounts apply)

Available for all  
Members

\* Terms & conditions apply



DERBY & SANDIACRE CANAL SOCIETY

'Save up to  
15% with  
our loyalty  
discounts'  
Ask for details.

## Main Distributors for:-



Eberspächer



STOVES

THETFORD

International.  
yachtpaint.com

SHURflo

JABSCO



Shoreline  
refrigeration • electrical • marine

WAECO

International

### Contact Details

Parkgate Lock, Teddesley Road, **Penkridge**, Staffs, ST19 5RH.

London Road, **Braunston**, Northants, NN11 7HB.

The Wharf, **Preston Brook**, Warrington, Cheshire, WA4 4BA.

Mercia Marina, Findern Lane, **Willington**, Derbyshire, DE65 6DW.

T 01785 712437

T 01788 891401

T 01928 751800

T 01283 701445

## **Fundraising.**

We now have a number of new fund raising initiatives that are available to raise further funds to help drive forward our ambition of restoring the Derby and Sandiacre Canal.



Through Recycle 4 Charity we are able to recycle inkjet cartridges, mobile phones and laser or toner cartridges, and a payment will be made to the Trust. Any of these can be brought along to a Society meeting and handed to a Committee member. Alternatively inkjet cartridges and old mobile phones can be sent for recycling in the envelope that is enclosed with this addition of The Packet. Before sending off the envelope; please add your name and address on the back so that Recycle 4 Charity can send more envelopes direct to you for future use. If you don't have anything to recycle please pass on the envelope to a friend or relative that does.

If you have laser or toner cartridges and can't bring them to a society meeting or you would like a collection box for a larger quantity of cartridges or for a business please contact our treasurer Chris ReesFitzPatrick.



Do you do any of your shopping online? If you do then you can get a donation for the Trust from the online retailer without your shopping costing you a penny more.

Give as you Live brings together thousands of leading stores, including John Lewis, Expedia and Tesco, who have all signed up to donate a percentage of every purchase you make online.

Get started by signing up at:

<http://www.giveasyoulive.com/join/derbysandiacrecanal> or follow the link and install Give as you Live.

### Derby Canal Company Dapol 00 Gauge Private Owner Wagon.

Having seen reviews of Dapol private owner wagons, in the Railway Modeller magazine, that are sold to raise funds for various charities a decision has been taken to commission a limited edition of approximately 100 wagons. The wagon will have a green background with "Derby Canal Company Established 1796" emblazoned in white text.

The wagon is relatively expensive to commission and this means that it will have a sale price of £12; which is in line with those advertised in the Railway Modeller magazine. If you wish to order one (or more) please contact Chris ReesFitzPatrick. Postage and packing costs will be determined once the stock is received and measured and weighed; for those of you that are local to the canal's route delivery can be arranged.

There are plenty of other items for sale such as Polo Shirts, Sweat Shirts, calendars, books etc. available from

Paul Birtles, 54, Springfield Avenue, Sandiacre, Derbyshire NG10 5LZ.  
(home) 0115 9730207.

*For all your*

*PAINTING, DECORATING and  
KITCHEN & BATHROOM TILING*



*CONTACT BARRY BOOLE*

*52, Moor Street,  
Spondon,  
Derby DE21 7EB*

*Telephone 01332 676293  
Mobile 07718 305616*

## THINKING OF BUYING A CARPET????

THE LAST TIME YOU HAD A CARPET FITTED

Did the Fitters cut your  
doors FREE OF  
CHARGE  
**WE DO!**

Did the fitters MOVE your  
FURNITURE WITHOUT  
CHARGE  
if you could not manage  
**WE DO!**

Did they TAKE YOUR  
OLD CARPET UP if you  
couldn't manage  
**WE DO!**

WERE THEY ON TIME,  
POLITE and BAG up all the  
WASTE afterwards  
**WE DO!**

Did they do a  
**GOOD JOB**  
**WE DO!**

Was the fitting STILL FREE  
even on the cheapest  
carpets and Vinyl  
**OURS IS!**

Did the shop offer to  
BIND any WASTE into  
MATS & RUGS for you  
**WE DO !**

If you weren't  
SATISFIED in any way,  
did the shop put any  
problems right to your  
satisfaction  
**WE DO!**

**Furniture at below  
City  
Centre Prices**

**FREE  
DELIVERY  
on all items**

THESE ARE JUST A FEW REASONS WHY OUR FAMILY FIRM HAS BEEN  
ESTABLISHED OVER 40 YEARS ON RECOMMENDATION ONLY.  
**PLUS THE BEST ALL-IN PRICE WITHOUT INFERIOR UNDERLAY &  
ACCESSORIES.**

*FREE HOME ESTIMATE & SELECTION*

**Chaddesden Furniture & Carpets**

637 NOTTINGHAM ROAD, CHADDESSEN, DERBY TEL: 01332 674638

## THE COTSWOLD CANAL TOWPATH GUIDE.

THE STROUDWATER NAVIGATION by MICHAEL HANDFORD.

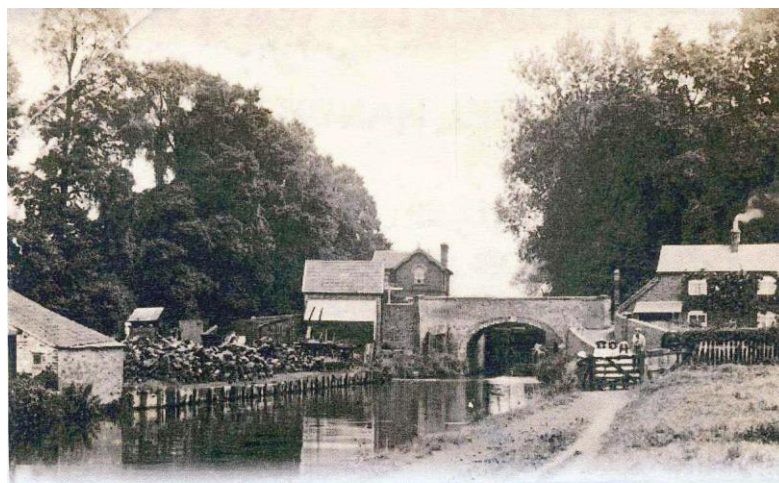
Paperback £12.99 ISBN 978-1-84868-843-8

The Stroudwater Navigation was a canal linking Stroud to the Severn Estuary near Gloucester. At Wallbridge it connected to the Thames & Severn Canal to form a link between the Thames and Severn rivers. It passed through 13 locks and was 8 miles long. The canal opened in 1779 and was abandoned in 1954.

In 2001 the Cotswolds Partnership was formed to restore the navigation from Stonehouse to Stroud.

This history is a revised edition which reflects the restoration that has taken place and has 100 B & W photos, many published for the 1st time, bringing the story up-to-date.

Available from bookshops or from Amberley Publishing.



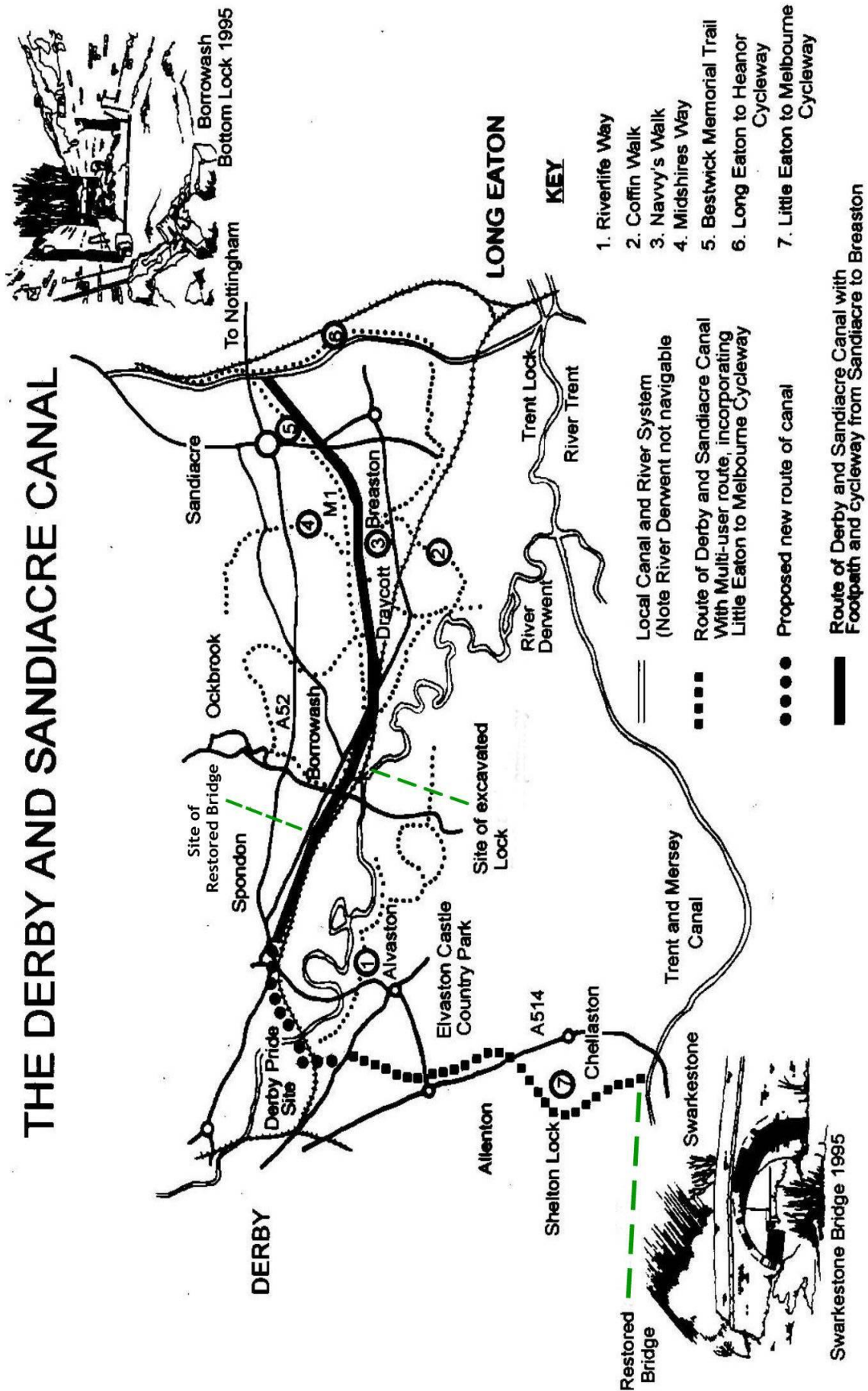
### THE COTSWOLD CANALS TOWPATH GUIDE

THE STROUDWATER NAVIGATION

Michael Handford



# THE DERBY AND SANDIACRE CANAL





Providing NHS Services



Pharmacies  
(B J Wilson Ltd)  
Delivering Healthcare to the Local Community



### **Prescription Medication & Management Service**

Unsure of your medicines?

Our pharmacies can check your next supply, order and collect your prescription.

**Discuss your health or medicine problems with our pharmacists in confidence;**

- Free Medicine Use Reviews—  
*Are your medicines right for you?*  
*Do you understand what they are for?*



Free prescription  
collection and delivery available

### **Other services include:**

- Stop Smoking –Advice & Support
- Pregnancy Testing
- Emergency Hormonal Contraception
- Minor Ailments—Advice and Treatment
- Service to Care Homes
- ‘Flu vaccinations at selected branches

For late opening hours telephone your local branch or our office at 01332 348545

Wilsons pharmacy online at: [www.bjwilsonltd.co.uk](http://www.bjwilsonltd.co.uk)

Shop on-line at: [www.wilsonspharmacyonline.co.uk](http://www.wilsonspharmacyonline.co.uk)